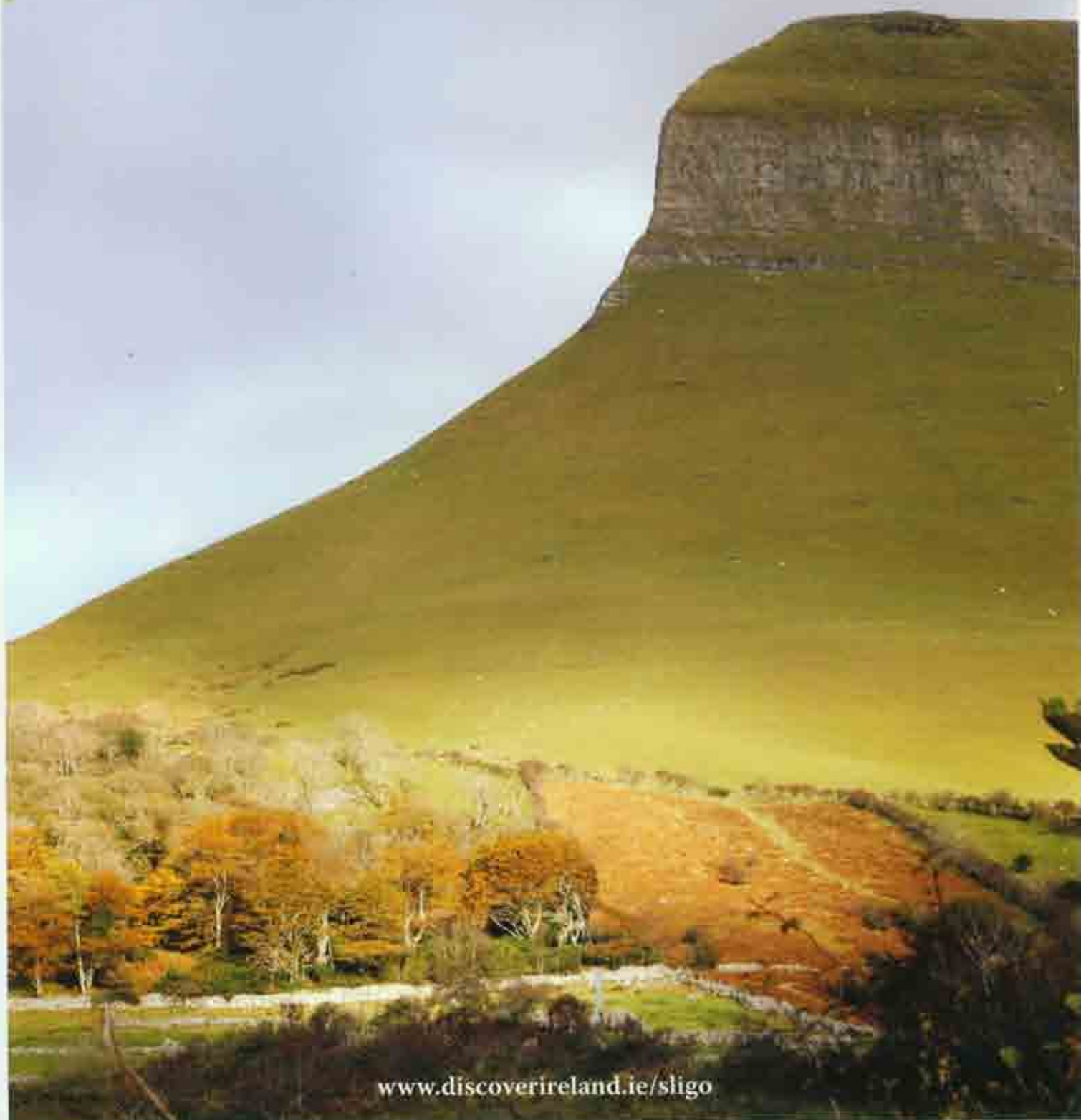


SLIGO

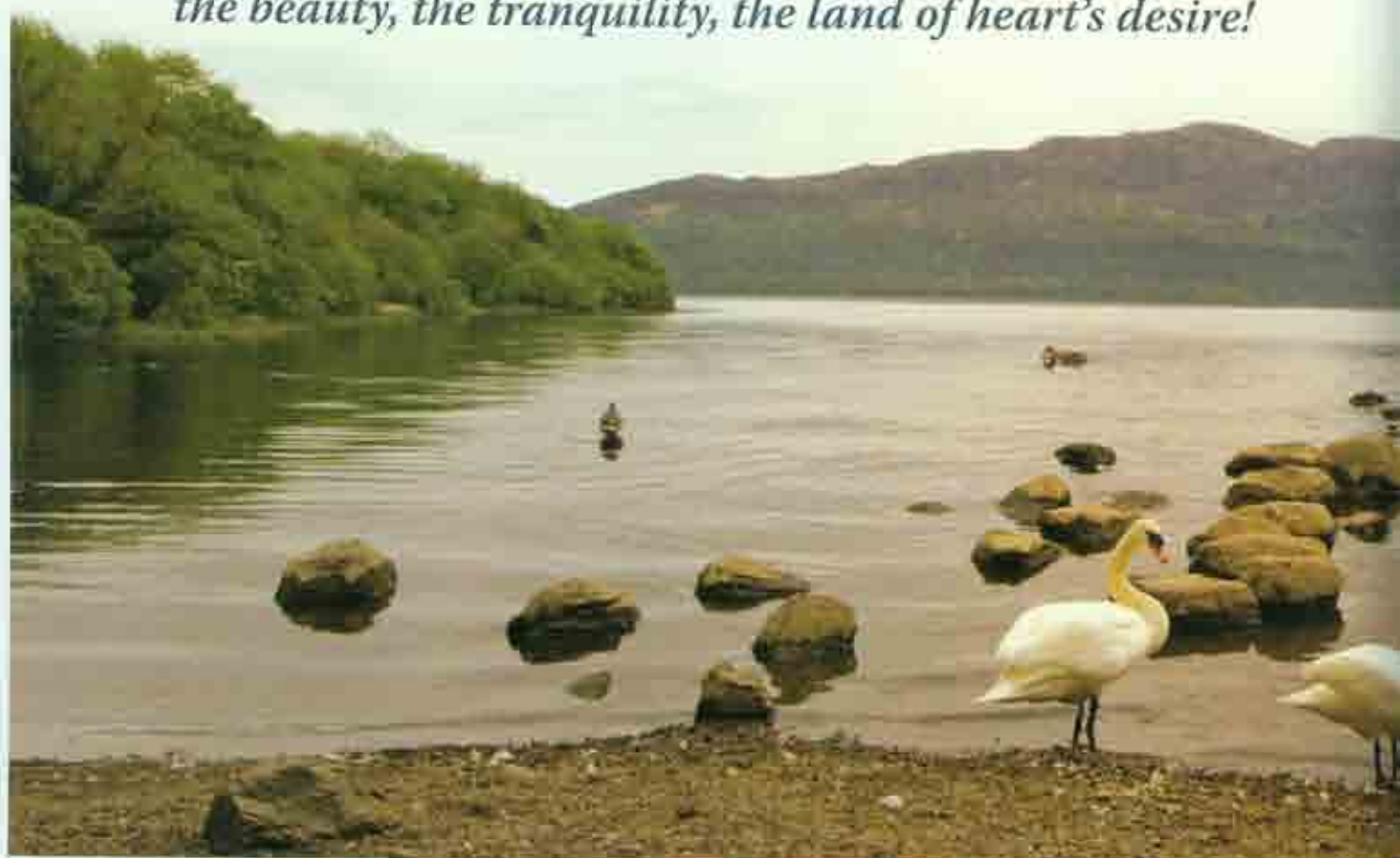


land of heart's desire



www.discoverireland.ie/sligo

*Welcome to Sligo, Ireland,
the beauty, the tranquility, the land of heart's desire!*



Contents

Family Fun	4
Cultural Sligo	5
Golfing	6
Ancient Place	8
To The Waters & Wild	9
Wet 'n' Wild	11
Saddle Up	12
Well Being	13
Walking, Hiking & Biking	14
Attractions	17
Festival & Events	18
The Arts & Entertainment	20
Getting Here	21
County Map	22
Accommodation & Visitor Services	23

Visit Sligo



Acknowledgements

All photography is the copyright of Marketing Sligo Forum, Fáilte Ireland North West, North West Regional Fisheries Board and Sligo County.

International Dialling Code

Outside from outside Ireland, please use the following prefix:
+353 (omit 04 01) 9171865 (business) 09153171 9171966

Disclaimer

The publisher is not responsible for any errors or omissions which may inadvertently occur in the information given in any classes made in addition and in advertisements. All information in this guide is subject to change.
© Marketing Sligo Forum, County Sligo Tourism and Fáilte Ireland North West.

Designed & Printed by: www.sharpcdesign.ie





Fáilte go Sligo

www.sligotourism.ie

Sligo, capital of the North West region, is one of Ireland's largest towns. Sligo offers a unique destination with the dramatic backdrop of Benbulbin, glimmering beaches, rolling green hills, and magical woodlands, with unsurpassed leisure activities and state-of-the-art business facilities, few places can compete as a destination for leisure or business.

From water sports and golf to seaweed baths and horse riding or even some leisurely fishing, the county has so much to offer you whatever your interests may be.

From the myths and legends of ancient Ireland to the poetry of Yeats and the music of Caloman, Westlife and Derylish, Sligo's cultural and literary heritage is world famous and still actively celebrated.

The model milland is an important contemporary arts centre of national standing with a significant collection of Jack B. Yeats's work. The magnificent Lissadell House, so beloved of William Butler Yeats and built by the famous Gore-Booth family, shouldn't be missed.

There's also a vibrant theatre tradition found in the Hawk's Well Theatre, one of the oldest regional theatres in the country, and the Blue Raincoat Theatre Company, a professional ensemble based at The Factory Performance Space.

The ancient county is filled with over 5,000 archaeological sites including the massive megalithic grave complex at Carrowkeel. Many of the walking routes incorporate sites of archaeological and historical significance.

Restaurants offer an extensive range of local seafood as well as speciality dishes accompanied by refreshing ales and fine wines. The Sligo Races are a dramatic sight with Benbulbin as a backdrop, and south Sligo is renowned for its traditional music. Sligo hosts a wealth of Festivals and Events throughout the year.

Choosing Sligo as your holiday destination ensures an unforgettable experience.

Family Fun



Remember when the beaches went on forever, when the sea glinted in the sun....

LSD Kiteboarding

Go Kite boarding at Esker & Strandhill, Ballywoolin, Rosses Point, Sligo.
+353 (0)86 8031390
www.kiteboardsligo.com

Eagles Flying / Irish Raptor Research Centre

Ireland's largest sanctuary for birds of prey including different species of eagles. Enjoy the Pet Zoo with goats, sheep, rabbits, guinea pigs, donkeys and more.
Rallymore, Co. Sligo
+353 (0)71 9189310
www.eaglesflying.com

Waterpoint

A fusion of waterpark, health suite and sports centre, including a 65m flume water slide and children's pool.
Pier Road, Ferrissarrine, Co. Sligo.
+353 (0)96 36999
+353 (0)87 2000371
www.waterpoint.ie

Gillighan's World

Knocknashes, legendary Hill of the Fairies, the land of artistry and imagination. Open May - 1st week September.
Lavagh, Co. Sligo.
+353 (0)71 9130286
www.gillighanworld.com

Swingle Tree Carriage Tours

Explore Yeats country by Horse Drawn Carriage.
Moneysgold, Grange, Co. Sligo.
+353 (0)71 9166156
www.ialandviewridingstables.com/driving

Woodville Farm

Visit the family run farm museum in the renovated 1870 horse stable, collect free range eggs, feed pet lambs and donkeys, and more. Open May - September. Only group bookings.
Woodville, Co. Sligo.
+353 (0)71 9162741

Lissadell House and Gardens

Tour the magnificent 1830s house; view the Countess Markievicz Exhibition; visit the Victorian Kitchen garden by the coach house and the Alpine Gardens by the seashore. Fun for all the family at Lissadell's Halloween & Christmas Camps, Ballinfall, Co. Sligo.
+353 (0)71 9163150
www.lissadellhouse.com

Rula Bula

Painting Pottery is fun for all the family.
Abbey House, Kennedy Parade, Sligo.
+353 (0)71 9147528
www.rulabula.ie

Funny Bones

House of fun, children's activity centre.
Tiberbridge, Collooney, Co. Sligo.
+353 (0)71 91 33281
www.funnybones.ie

Sligo Regional Sports Centre

Take a splash in the 25m indoor heated swimming pool, or relax in the steam room or Jacuzzi. Children's pool is just 18 inches deep.
Cleveragh, Sligo.
+353 (0)71 9100539
www.sosport.ie

Bertie's Pitch & Putt

+353 (0)71 9146383
bertiespitchandputt@icrow.net

Happy Days

Indoor play centre.
Cleveragh, Sligo.
+353 (0)71 9135113
+353 (0)86 6098448

Sligo Folk Park

Sligo Folk Park promises a true experience of rural and Irish Heritage at the turn of the late 19th century. Riverstown, Co. Sligo.
+353 (0)71 9165001
www.sligofolkpark.com

Sathya Sai Sanctuary For Donkeys, Nature And Wildlife Attractions

Castlebaldwin, Co. Sligo.
+353 (0)71 9666196

Hazelwood

2mils from Sligo Town at Half Moon Bay on the shores of Lough Gill is the Hazelwood Demesne. It has a series of outdoor sculptures by Irish and International artists. Hazelwood is one of the best places to observe woodland birds. Resident species include robin, wren, blackbird, song thrush, nuthatch, jay, chaffinch, bullfinch, treecreeper, blue tit, great tit and coal tit may be easily observed in the winter; with willow warbler, chiffchaff, blackcap and woodcock coming to breed in the summer. It has a picnic area and spectacular lakeside views. Watch the swans as they gracefully glide by.

Cultural Sligo

Culture in Sligo is a lively, attractive combination of contemporary and traditional theatres and art centres.

Writers and artists have been inspired by Sligo, the poet William Butler Yeats is synonymous with County Sligo and is buried in Drumcliff. Museums offer time for reflection on bygone times. Impressive stately homes, each with a story to tell.

CLOSED



Lissadell House

Lissadell House

Set amid the stunning scenery of mountains, woods and sea, Lissadell House & Gardens are famous as the childhood home of Constance Markievicz and her siblings Eva and Josslyn Gere Booth. Constance was one of the leaders of the 1916 Rising, and was the first woman to be elected to the House of Commons at Westminster, London. Eva was poet of distinction and suffragist; Josslyn created at Lissadell one of the premier horticultural estates. This horticultural enterprise is now being recreated at Lissadell. www.lissadellhouse.com

Sligo Folk Park

Riverstown
Experience rural life and Irish heritage at the turn of the late 19th Century. www.sligofolkpark.com

Sligo Gaiety 12 Screen Multiplex

www.gaietysligo.com

Yeats Grave, Drumcliff Church

The Nobel Laureate William Butler Yeats is buried in Drumcliff.

Yeats Memorial Building

A beautiful 19th Century red brick building, the home of the Yeats Society Sligo. www.yeats-sligo.com

Blue Raincoat Theatre Company

A professional ensemble based at The Factory Performance Space. www.blueraincoat.com

Coleman Music Centre

Centre for the enjoyment, further understanding and learning of traditional music and Irish culture. www.colemanirishmusic.com

Hawk's Well Theatre

One of the oldest regional theatres in the country. www.hawkswell.com

Sligo Art Gallery

Sligo Art Gallery is located in the Yeats Memorial Building at Hyde Bridge. www.sligoartgallery.com

Sligo County Museum

Sligo County Museum is divided between a Yeats collection and an accumulation of local artefacts and geological samples. +353 (0)71 91 41 623
Email: sligo@sligooco.ie

Sligo Races

Flat and National Hunt Racing. 8 race meetings. www.county-sligoraces.com

model :: niland

The Model Arts and Niland Gallery is closed in the short term to facilitate an exciting redevelopment. Check our website for offsite programmes. www.modelart.ie

Golfing



Golfing with Benbulbin backdrop

Sligo boasts magnificent links courses along the Atlantic seaboard and provides some of the most challenging and exhilarating golf in the world.

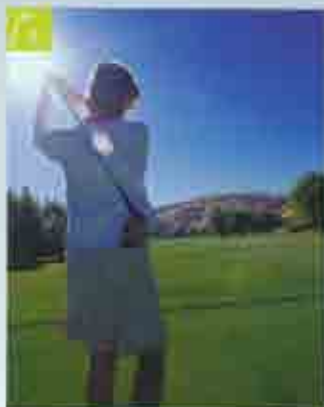
Play our parklands over fairways adorned with ancient mature trees, natural water features and all enjoy unspoiled views of the county. Most of the courses provide caddy and catering facilities.



Ballymote Golf Club

Ballymote, Co Sligo

+353 (0)71 9189059
www.ballymotegolfclub.ie



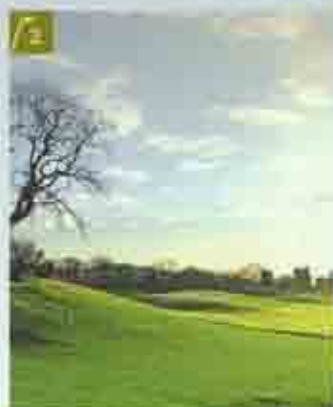
Ballymote is a gem of a course hidden between the Cuadoc Mountains and Ballymote Town. The Lake Hole 7th is the signature hole set into Ballymote's Lake and will match the 17th at Druids Glen as a beautiful spectacle. The rest of the course plays over 2600 metres long and has picturesque undulating holes carved from the green countryside of Ballymote. Full Changing rooms, Trolley hire and club hire are available.

18 Hole

Castle Dargan Golf Club

Collooney, Co Sligo

+353 (0)71 9119080
golf@castledargan.com
www.castledargan.com



Majestically set on 200 acres of rolling hills with old stone walls and ancient castle ruins, Castle Dargan is the centre piece to this luxury resort. Darren Clarke's signature hole, the short but challenging 15th, hole measuring 260 yards where accuracy can result in a birdie or where the lake awaits a wayward tee shot. Off the course and for those interested in practice the unique golfing academy is made up of 4 par 3 holes all recreated from famous short holes from around the world.

18 Hole

County Sligo Golf Club

Rosses Point, Co Sligo

+353 (0)71 9177134
+353 (0)71 9177460
www.countysligogolfclub.ie



Scenic and challenging 18 hole links courses, 6136 metres and 9 hole links courses 2785 metres. Bordering the Atlantic Ocean with Benbulbin and Knocknaree back drops with scenic views of five counties from third tee. A challenge to the heart of golfers and fun for all. Home for the West of Ireland Amateur Golf Championship at Easter. Open to visitors 7 days a week all year round.

27 Hole

Enniscrone Golf Club

Enniscrone, Co Sligo

+353 (0)96 36297
enniscronegolf@eircom.net
www.enniscronegolf.com



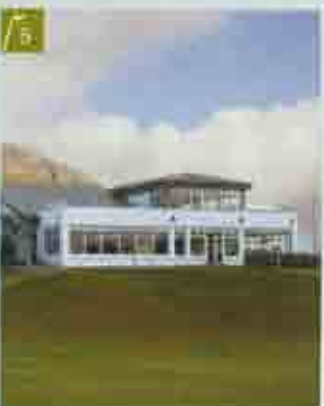
Situated beside the picturesque seaside town of Enniscrone, the golf course affords panoramic views of Killybegs Bay, Barra Island and sandy beaches with Neptun and the Ox Mountains forming the backdrop. Founded in 1918, redesigned by Eddie Hackett in 1978 and by Donald Steel in 2001, this championship course is one of Ireland's finest links courses. Apart from the championship links known as The Dunes, there is also the splendid 9 hole Scurrocco.

27 Hole

Strandhill Golf Club

Strandhill, Co Sligo

+353 (0)71 9168188
info@strandhillgc.com
www.strandhillgc.com



Strandhill Golf Club was founded in 1931 and had a nine-hole course open for play in 1940. Play on the present 18 holes commenced in 1973. The clubhouse has been updated on a number of occasions to its present standard and is now regarded as one of the best in the west. With Knocknaree in the background it has stunning views of the course, the rolling Atlantic and the setting sun.

18 Hole

Tubbercurry Golf Club

Tubbercurry, Sligo

+353 (0)71 9185849
societies@tubbercurry.com
www.tubbercurrygolfclub.com



Nestling at the foot of the Ox Mountains, this picturesque 9 hole golf course at Tubbercurry, Co. Sligo is centrally located, 15 minutes from Knock Airport, 30 minutes from Sligo Town. The 6200 yards course has full Clubhouse facilities.

9 Hole

Ancient Place

Sligo's archaeological and mythological heritage is incredibly rich, the landscape is peppered with monuments, stretching back 5,000 years.



Ballymote Castle

Richard de Burgo, the 'Red Earl' of Ulster, built the remains of this Anglo-Norman castle in AD1200, and it was the strongest fortress in Connaught. The Book of Ballymote was probably compiled here c.1400AD.

Carrowkeel

Situated above the western shore of Lough Arrow is the impressive passage tomb cemetery of Carrowkeel located in the beautiful limestone upland of Buckhieve Mountains. There are 24 cairns here with a further 6 cairns extending to the west to Keshcorran Mountain, which is capped with a large cairn, dating back to between 3,800-3,300 BC during the Neolithic period.

Creivykeel Court Tomb

This is one of the best examples of a court tomb in Ireland, it consists of a long, trapezoid shaped cairn enclosing an oval court and a burial chamber of two compartments, dating from the 4th millennium BC.

Drumcliff Church, Round Tower and High Cross

This site is a monastic settlement, and also the burial place of the famous Irish poet W.B. Yeats. It's importance dates from 574AD when St Colmcille founded a monastery here. The principle visible remains of the monument are the remains of Sligo's only round tower, a high cross and a fragment of a plain high cross. The high cross dating from the 10th century has scenes from both the old and new Testaments.

Carrowmore Megalithic Cemetery

This is the largest cemetery of megalithic tombs in Ireland and is also among the country's oldest and most important in Europe. Over 60 tombs are recorded, all of which predate the pyramids of Egypt.

Sligo Abbey

Known locally as the Abbey, this Dominican Friary was founded in 1252/3 by Maurice Fitzgerald. The site contains a great wealth of carvings including Gothic and Renaissance tomb sculpture, well preserved cloister and the only sculptured 15th century high altar to survive in any Irish monastic church. This enigmatic friary will inspire and enlighten it's visitors. Access to site is by stone stairway.

Maevic's Cairn

Overlooking Carrowmore megalithic cemetery on the summit of Knocknurea Mountain is the huge flat-topped cairn called 'Máireann Meadhóga' (Maevic's Cairn), 55m in diameter and 10m high. The name of the monument along with folklore suggests it was built for the mythical Maevic, the Iron Age Queen of Connaught. Walkers can access via a dirt track from base to summit.

Ballinacast Castle

This is located in the ancient road called the Red Earth road that linked Ballymote to Boyle. The design was modelled in the 13th century plan and stands four storeys high.

Knocknashee

The 'Hill of the Fairies' located near Tubbercurry on a spectacular limestone table-top plateau commanding a widespread view over the north Connaught plain. The scale and commanding location of the site suggests that it was a regional centre at the end of the Bronze Age c.1000BC.

Heapstown Cairn

This is the largest cairn in Ireland outside of the Boyne Valley. It is 60m in diameter, with a kerb of often very large limestone slabs enclosing the base. Heapstown has not been excavated but it is thought most likely to be a passage tomb, an extension of the Carrowkeel megalithic complex.

Ballindoon Abbey

The Abbey lies on the eastern shore of Lough Arrow. Inside the ruins of a 14th century Dominican Abbey there is an interesting monument to Terence McDonough. It is entirely built in the Middle English Gothic style.

Deerpark Court Tomb

This large and imposing monument is considered by many to be the finest example of a central court tomb in Ireland. It occupies a magnificent position on top of a limestone ridge overlooking Lough Gill and is surrounded by a panorama of mountain scenery.

To The Waters & Wild

Explore Sligo's amazing mix of beaches, at Rosses Point; Dunmoran Strand; Streedagh Strand; Mullaghmore; Enniscrone, Strandhill, and Culleenamore.

Cast your rod, experience Sligo's abundance of waterbased activities. World class surfing, sailing, scuba diving, deep sea angling, fishing, island tours and more....

I dropped a berry in a stream and caught a little silver trout,...

Angling



Trotting a woen on the Drumcliffe River

Game Angling

The Ballisodare River

The Ballisodare River is just 5 miles long and flows from Cullinane into Ballisodare Bay. With its tributaries, the Union River, the Owenmore River and the Owenbeg River, it drains a catchment of 252 square miles, which includes Lough Arrow and Templehouse Lake. Most of the fishing action takes place below the "Barr" of the Ballisodare Falls. There is a small run of spring salmon and in June/July the peak of its large grilse run is seen. There is some very good sea trout fishing in the estuary in the evenings on a rising tide. The famous Falls Pool at Ballisodare provides some fine fishing throughout the summer months. Angling must be booked in advance.

The Easkey River

The Easkey River is a picturesque spate stream of approximately 20km in length. Its principal source is Lough Easkey situated high in the Cix Mountains which straddle Counties Mayo and Sligo. The river gets superb runs of salmon and sea trout from June and each summer spate brings fresh run fish right up to the end of the season. Most of the water is suitable for fly fishing with a single handed rod and there are some beautiful secluded pools which can produce wonderful sport any time between June and September. The Farland Fishery, situated in the lower end of the Easkey River, comprises approximately 3 miles of double bank angling for salmon & sea trout in a beautiful & secluded wooded estate setting.

Lough Arrow

Arrow is one of the great Irish trout fishing loughs where the trout average 1 1/2lb and fish to 6lb and 7lb are taken on fly annually. It is 4 miles north-west of Boyle, with Ballymote 6 miles and Ballyfarina 5 miles away. It is a limestone lough, incredibly rich and, while it has some feeder streams, it is mainly spring-fed. The scarcity of spawning and nursery areas is a limiting factor in trout production. It is no longer stocked and anglers should not expect big catches. What you get is quality trout, but fewer of them. There is public access at Brick Pier on the eastern shore, Ballinacraigh Pier on the southern shore and Rinnabawn Pier on the western shore.

Lough Tilt

Lough Tilt is a very picturesque lake of about 200 acres located in the foothills of the Cix mountains. The R294 Ballina - Tubbercurry road runs right along the northeast shoreline, making it easily accessible. It can be fished from the shore, which is soft and accessible. The trout here range from 1/2 - 3 lbs with the occasional pouties. They are free eating and numerous, making it an ideal location for the young or inexperienced angler.

Garavogue - Lough Gill and River Bonet

The open season for salmon and sea trout is from 1 January to 30 September; for brown trout, from 1 March to 30 September. Lough Gill is a large lough, nearly 6 1/2 miles long from east to west and 2 1/2 miles wide at its widest point. It lies about 3 miles east of Sligo and the R286 Drumahaire-Sligo road runs close by the shore on the northern end and the R287 on the southern side.

There is public access and parking at Innyfren, Sciff Bay, Aghamore and Hazelwood Bay. This lough holds brown trout and salmon. It gets a run of spring salmon and anglers are out from opening day. Most of the fishing is done by trotting. February and March are regarded as good months and so also is May, but after that the salmon fishing is over for the season. Lough Gill also holds a stock of good brown trout averaging 1 1/2 lb. They tend to be dour and slow to take and anglers concentrate a lot of their trout fishing efforts on the mayfly season from mid-May to mid-June when the trout fishing can be good.

Glencar Lake and Drumcliff River

This lovely lough, south-east of Bonmahon, is approximately 2 miles long by 1/2 mile wide. Situated in a deep valley to the north of the N16 Manorhamilton-Sligo road, 5 miles from Sligo, it has a spectacular waterfall at its north-east corner. The lough has a resident stock of small brown trout and gets a really good run of sea trout and a fair number of salmon, both spring fish and grilse.



To The Waters & Wild



Sea Trout fishing on Glenca Lake

Coarse & Pike Angling

Owenmore River

The Lind Storch is a very accessible location situated 7 miles outside Ballymote on the Ballinacarrow road. It holds bream, rudd, hybrids and perch. Bags of bream up to 100 lbs have been recorded on this stretch.

Ballinacarrow Lake

This lake has large stocks of bream, rudd and hybrids. It also holds some carp. The lake has excellent facilities including a car park, angling mounds and stiles.

Ardrea Lake

This is a small lake 2 miles north of Ballymote. It holds large stocks of bream, rudd, hybrids, specimen tench, perch and pike.

Cloonacleigha Lake

Situated 4 miles west of Ballymote opposite Templehouse Lake is Cloonacleigha Lake. The lake covers almost 30 acres. There is a slipway for launching boats.

Templehouse Lake

It is best fished from the Killmattan shore. Permission has been granted by Mr Roderick Perceval J + 353 (0) 719183329, to fish for the lakes excellent stock of bream and its pike and rudd.

Lough Gill

Beautiful Lough Gill is best known as a salmon and trout fishery but it holds sizeable stocks of pike and perch and a good stock of bream. A few pike competitions are fished there annually with fishing mainly from boats whereas bream fishing would be carried out from the suitable shoreline locations.

Ballymote

The Ballymote area offers a good variety of coarse and pike fishing on a number of lakes and the Owenmore River.



Coarse Fishing in Co Sligo

Shore Angling

Mullaghmore Pier

On the sheltered side of the headland, looking back across the strand to the mountains of Sligo, it is a haunt of mullet and the source of many of specimen size. They are taken on pieces of fish or bread at high water. The breakwater, at the harbour entrance, yields dabs, flounder, pike and occasional ray in summer. On the exposed, rocky north coast is Darby's Hole where the gently sloping rocks provide excellent fishing for big wrasse.

Easkey

The quay provides bottom fishing for conger, float fishing for wrasse and spinning for pollack, best at high water. At high water, the two rocky points, Leadoona Point to the west and Carrynahanna to the east, offer wrasse, coalfish, pollack and a possibility of conger. Kilshegheer Strand, 7 miles (11 km) east of Easkey has surf fishing for dogfish and flounder, with a possibility of tope, best on a flood tide and especially at the mouths of streams.

Enniscrone

The pier provides bottom fishing for conger, dogfish and occasional ray, float fishing for wrasse and spinning for coalfish, mackerel and pollack. The strand is good for surf fishing, particularly in autumn, for dabs, flounder and dogfish and occasional sea trout. The Moy Estuary nearby has excellent sea trout.

Rosses Point

Rosses Point, at the entrance to the trout Mign Bay is a good spot for spinning for mackerel and sea trout in summer and can yield the occasional bass. Coney Island, at the mouth of the bay is approachable from the land only at low tide. Flounder and sea trout can be caught in the main channel. The rocky promontory of Strandhill, surmounted by the stone-age mausoleum known as Queen Maeve's Tomb, is a popular seaside resort with a fine beach. Flatfish can be caught from its southern end and occasional bass in autumn. Across the channel from Strandhill, Portcurry Point also yields flounder and sea trout, with a possibility of tope. Mullet can be plentiful there in hot weather. The southern outpost of Sligo Bay, Aughris Head, has good beach fishing for flounder and dogfish with possibilities of tope and ray.

Sea Angling

Sligo's coastline stretching from Mullaghmore to Easkey gives every conceivable variety of ground, from superb streams, through broad estuaries to rocky shores with off shore reefs. And that's just the mainland. Islands abound and beyond them the deeper waters of the Atlantic Ocean.

Deep Sea Angling

Fully equipped licensed boats for deep sea fishing are available around the coast where experienced local skippers will guide you. Bottom fishing is available all year round for a great variety of species. There are several reefs with abundant pollack and wrasse.

Further information on all types of angling can be obtained from:

The North Western Regional Fisheries Board
Ardnaree House
Abbey St.
Ballina
Co. Mayo
Tel: +353 (0)96 22788
Fax: +353 (0)96 70543
E-Mail: info@nwrtb.com
Web: www.northwestfisheries.ie

Wet 'n' Wild



Catch a wave... The seaside village of Strandhill, is one of Ireland's most popular beach breaks. West Sligo is renowned for its quality surf, takes in Aughris, Easkey and Enniscrone.

Island Tours

Excellour Islands/ Murray Tours
www.sligoheritage.com

Rose of Innisfree
Kilmore, Fivemilebourne, Co Leitrim
+353 (0) 71 9164266
info@roseofinnisfree.com
www.roseofinnisfree.com

Coney Island
Accessible by land at low tide, it is believed locally that it's more famous namesake in New York was named after the Irish Island by a Sligo sea captain. The mud flats provide water feeding grounds for the Brent goose, as well as wild duck and waders.

Sailing

Mullaghmore Sailing Club and Centre Ltd
Mullaghmore, Clontoney, Sligo
+353 (0)71 9144392
www.mullaghmoresailingclub.org

Sligo Yacht Club
Rossa Point, Sligo
+353 (0)71 9177168
sligoyc@eircom.net
www.sligoyachtclub.org

Surf Schools

Perfect Day Surf School
Strandhill, Sligo
+353 (0)87 3029399
info@perfectdaysurfing.com
www.perfectdaysurfing.com

Strandhill Surf School
Beach From
Strandhill
Sligo
+353 (0)87 2870817
strandhillsurf@eircom.net
www.strandhillsurfschool.com

Seventh Wave Surf School
Enniscrone, Sligo
+353 (0)87 9716389
seventhwavesurf@eircom.net
www.seventhwavesurfschool.com

North West Surf School
Enniscrone, Co Sligo
+353 (0)87 9595556
info@nwsurfschool.com
www.nwsurfschool.com

Strandhill Surf Cam
www.strandhillsurfcam.com

Other

Sligo Regional Sports Centre
CleAraugh, Sligo Town, Sligo
+353 (0)71 9160539 / +353 (0)71 9158944
www.sosport.ie

Waterpoint
Pier Road, Enniscrone, Co Sligo
+353 (0)87 2880571 / +353 (0)96 36988
stu78@hotmail.com
www.waterpoint.ie

ISD Kiteboarding
Ballyweelin, Rosses Point, Sligo
+353 (0)86 8051990
info@isdkiteboarding.com
www.isdkiteboarding.com

Sligo Bird Watch
www.sligobirding.com

Off Shore Watersports
Scuba Diving, Power Boating & Fishing
www.offshore.ie

Harbour View Dive Centre
www.club.ie/firstsite/sligo/diving.htm

Sligo Rowing Club
Rory Clarke
roryclar@gmail.com

Sligo Field Club
Promoting an interest in the built heritage and natural environment - archaeology, history including industrial, architectural and engineering history, folklore, botany, ornithology and geology
www.sligofieldclub.ie

Saddle Up



The combination of experiencing the qualities of the Irish horse with the breathtaking and ever-changing landscape of Sligo makes horse riding a memorable occasion.

All the centres listed are A.I.R.E. approved and each has something different to offer. Beaches, moors, mountains, forest trails and lakeshore can be enjoyed in an unspoilt environment.

County Sligo Races

County Sligo Races Ltd
Elevenagh Road
Co Sligo
+353 (0)71 9162484
info@county-sligoraces.com
www.countysligoraces.com

Horse Holiday Farm

Grange
Sligo
+353 (0)71 9166152
+353 (0)71 9166100
hhf@eircom.net
www.horse-holiday-farm.com

Island View Riding Stables

Monoygold
Grange
Co Sligo
+353 (0)86 1956815
islandview@eircom.net
www.islandviewridingstables.com

Markree Riding Stables

Collumex
Sligo
+353 (0)71 9180727
markreeridingstables@eircom.net

Sligo Riding School

Carrowmore
Sligo
+353 (0)71 9161353
+353 (0)71 9162028
info@irelandinhorseback.com
www.irelandinhorseback.com

Woodlands Equestrian Centre

Loughill
Lavagh
Tubbercurry
Co Sligo
+353 (0)71 9184207
+353 (0)71 9184220

Well Being



Icon Spa

Castle Dargan, Ballygawley, Co. Sligo.
Tel: +353 (0)71 9118080 / 9118090
Email: iconspa@castledargan.com
Web: www.castledargan.com

ICON SPA Ireland's first Destination Medi Spa is the centrepiece for rest and relaxation in Castle Dargan Hotel, situated in beautiful Co. Sligo. Luxury comes as standard at ICON, the unique facilities are anything but. Presenting large well-appointed treatment rooms, friendly professional therapists and a location fit for royalty at Sligo's finest Luxury Golf Resort.



Essence Spa at the Clarion Hotel

Clarion Road, Sligo, Co. Sligo.
Tel: +353 (0)71 9119037
Email: essence@clarionhotelsligo.com
Web: www.clarionhotelsligo.com

The Essence Spa at the four star Clarion Hotel in Sligo, is a real gem and popular with visitors and locals alike. Essence gives you everything you need to feel fantastic with wonderful body treatments, detox therapies, facials and massages to uplift your spirit. Treat yourself from head to foot whether you're with us for a weekend or just a day and you'll leave with a new sense of well being.



Kilcullens Hot Sea Water and Seaweed Baths

Cliff Road, Enniscrone, Co. Sligo.
Tel: +353 (0)96 36238
Email: bathhouse@encom.net
Web: www.kilcullenseaweedbaths.com

Since 1912 Kilcullens Bath House has enjoyed a thriving business through the years. An old Edwardian building with Edwardian fittings and Original Edwardian 7" porcelain baths. We have 14 Baths – several rooms with two baths and a cedar-wood steam box and the remaining with one bath and one steam box. We pump fresh sea water twice daily from the unpolluted Atlantic Sea which is a stone's throw from our Bath House. The Seaweed is cut daily from the rocks.



Ciúnas Spa

Cromlech Lodge Country House,
Lough Arrow, Castlebaldwin, Co. Sligo.
Tel: +353 (0)71 9165155
Web: www.cromlechlodge.com

Journey to the heart of silence – Experience our thermal suite – sauna, steam room, seaweed bathing room and outdoor Jacuzzi overlooking the magnificent landscape stretching across Lough Arrow to Carronee's ancient tombs. For our treatments we have our local VOYA range from Strandhill.



Solas Spa & Wellness Centre at the Radisson SAS Hotel

Ballinacree, Rosses Point, Co. Sligo.
Tel: +353 (0)71 9140008
Email: info.sligo@radissonsas.com
Web: www.sligo.radissonsas.com

Solas Spa & Wellness Centre is a haven of relaxation and solitude designed to relax the mind, pamper the body and soothe the soul. Solas provides the latest in natural beauty and holistic therapies through the interaction of human touch. Boasting a luxurious Relaxation Suite, seven treatment rooms and an impressive Thermal Suite, offering a number of different elements each designed for maximum indulgence.



Voya Seaweed Baths

The Maritime Centre, Strandhill, Co. Sligo.
Tel: +353 (0)71 9168686
Email: info@voya.ie
Web: www.voya.ie

Imagine relaxing back into a luxurious steaming bath of fresh seawater and wild organic seaweed. Floating effortlessly in a soothing and tranquil state, your skin feels smooth and renewed. VOYA's organic treatments are recommended for those who are overworked, stressed or simply seeking an natural detoxing process for the skin. VOYA will delight and relax the soul while enhancing the mind and body.



Eros Spa at the Yeats Country Hotel

Rosses Point, Co. Sligo.
Tel: +353 (0)71 9117954
Email: justinmcclwee@yodafone.ie
Web: www.yeatscountryhotel.com

The Eros Spa is located in the scenic Rosses Point area. We have a treatment menu specifically tailored for the discerning customer. We offer seaweed baths, Balneotherapy bath, double treatment suite for couples, Reflexology, Indian head massage, Reiki, Lymphatic drainage massage, beauty treatments and hair dressing facilities.



Pier Head Hotel Spa & Leisure Centre

Mullaghmore, Co. Sligo.
Tel: +353 (0)71 9166171
Email: pierheadreception@etrc.com.net
Web: www.pierheadhotel.ie

Leisure Centre features a pool, gym, sauna, hot-tubs, seaweed baths & steam showers. Our hot-tub is situated on the roof-top of the hotel overlooking the Atlantic Ocean. Thalassotherapy (seaweed based therapy) has been popular for thousands of years.

Walking, Hiking & Biking

Walkers revel in mountain hikes, waymarked trails, looped walks or strolls along the beach.



Coastal Walks

Rosses Point

Located 8km from Sligo Town Rosses Point, seaside village with a magnificent championship golf course. Spectacular scenic views with the Atlantic Ocean on the West, Benbulbin dominating the view of the Northern skyline, the east Glencar valley and the Derry mountains with Lugnaquilla and Truskmore, while the southern vista is completed by Knockiarva topped by a large Cairn of stones reputed to be the grave of the Warrior Queen Maevy of Connaught. Enjoy a bracing walk.

Enniscrone Coastal Walk

The walking route will begin at the Pier, taking in the shoreline to the Carraghobock North Road, on to the main road and back into Enniscrone. It is located in a strategic scenic position in Enniscrone with panoramic views of Killala Bay and its environs.

Lissadell

1.5km from the village of Carney on the shore of Drumcliff Bay. The site is located within the Lissadell Estate which was formerly owned by the Gore-Booth family. Although not way marked, a very pleasant walk (The Drumcliff Bay Walk) is available at the site. The walker is taken along a forest path which runs parallel to the public road and to a stretch of the northern shore of Sligo Bay called Drumcliff Bay. www.coillteoutdoors.ie

Looped Walks

Doonry Park

Located along the riverside in Sligo town, about 15 minute walk from the town center. In the 19th century Colonel W G Woodmartin of Cleveragh developed this wetland on his estate. A series of ponds were excavated and drier areas were planted with oak, Scotch pine and a number of other species of trees. There is a nature trail through the park and a picnic area. Recent development includes a new cycling / walking amenities which include 1Km adding to the existing 100m walking trail with looped link pathway to connect existing woodland and cycling pathway.

Way Marked Ways

The Sligo Way

The Sligo Way is 74km long distance walking trail, it starts at Lough Talt on the Tubbercurry/Balfin Road R294 and goes east through the village of Coolaney on to the town of Colnooney which has good access. It proceeds eastwards along the shores of Lough Gill to the village of Droghidain where it ends.

The Miners Way & Historical Trail

118km, a network of walking paths which wind their way through adjoining parts of Counties Sligo, Leitrim and Roscommon. The Miners way follows many of the paths used by the miners going to work in the Argina coal mines. Note: Upland and bog sections. www.walkireland.ie

FREE MAP available at the
Tourist Information Office or email:
northwestinfo@failteireland.ie

Walking, Hiking & Biking

Forest Walks

Slish Wood

Slish Wood is located about 6 km west of Dromahaire, on the R287 to Sligo. You will find about 3 km of forest walks at Slish Wood. It is a pleasant lakeshore and hillside walk, tracks all the year. It has some lovely views of Lough Gill. The walk is an easy to follow route all the way, the best way to begin is from the north end of the car park and walk along the track beyond with the lake and its tiny wooded islands glimpsed through lovely deciduous trees close on the left.

Deer Park

1 km east of Sligo on the road to Calfry. The focal point of the site is the preface of a court tomb which dates back to the 3rd millennium BC. There is also a stone circle close by to the trail with a cashel, wedge tomb and souterrain in adjoining lands which is accessible from the trail.

Other Walks

Sligo Mountain Walks: Benbulbin and Knocknarea

Knocknarea Mountain (329m) is six miles from Sligo town and offers a relatively easy walk of about 45-60 minutes. Knocknarea has a mound of stones at the top, reputedly the tomb of Crommhaigh's legendary Queen Maeve. Benbulbin (527m) has a striking table top profile and is one of Ireland's most famous mountains. It features prominently in Irish legend and more recently has been associated with W.B. Yeats, who is buried nearby.

Dartry Mountain Range

At time of writing it is hoped to develop a walk to access Sligo's iconic mountain Benbulbin. Check www.discoverireland.ie/sligo for updates.

Sligo Spur Walks

The Sligo Spur Walks, many of which link into The Sligo Way traverse the Ox Mountain region and stretches from Lough Talt in South Sligo to the border with County Leitrim at Dromahaire. The nineteen walks vary in length from about 1 hour to 6 hours. The walks are all circuits, mostly starting and finishing from a small village or town.

Walk Highlights:

The **Lough Talt Walks**, numbering three includes a short walk around the beautiful Lough Talt.

The **Knocknashee Walk**, which is less than one kilometre, climbs to the summit of one of the most striking hill top features of the Ox Mountain region.

The **Tubbercurry Walks** all start from the centre of this most beautiful old Irish industrial town and include the five kilometre strand 'Lever's Lane'. Come walking here in July and you will be entertained with a feast of traditional Irish Music and culture.

Traverse the **River Walk at Coolaney**, county winner of the Tidy Towns competition. Enjoy an ecological wonderland and listen to the rushing water through the old mill race.

The **Cloona-roof Walks** take you along quiet country roads and across the Mill River. Cloona-roof is surrounded by three bridges, take a look at the different shapes of each one as you pass by.

Union Wood

6km south of Sligo Town on the R284, is an old woodland site which was formerly part of the Cooper Estate. The Sligo way, a National Waymarked way cuts through a section of Union Wood. From this trail, the Sligo Way proceeds onto the eastern shore of Lough Gill at Slilwood and onto the village of Dromahaire, Co Leitrim.

The Warren Way, Castleconnor

Is primarily a woodland walk however it is significant that it runs along open farmland, passes over a freshwater marsh and eventually leads to estuarine mudflats. The interaction between these different habitats gives rise to an incredible wealth of species in a relatively small area each in its own way dependant on another series plants or animals.

Yeats Passport Trail

An intriguing journey that draws you into the world of Nobel Poet William Butler Yeats and his brother Jack Yeats. From Dublin to the West of Ireland, through landscape, literature, history and culture. Experience on foot or through suggested driving routes. www.discoverireland.ie/yeatsrail

Lough Arrow Walks

Ten circular walks introduce the rambler to further delights in the scenic Lough Arrow and Lough Key area. They explore the fascinating archaeology, prolific wild fauna and the cultural flora in an ancient land that has retained its beauty and has remained remarkably unspoiled. Starting points in Boyle, Castleblawin, Ballymahol on the N4. Length: 4km, 12.5km approx.

Sligo City Yeats's Trail

Yeats would still recognise Sligo City, (sligo continues to unload at the docks **Markievicz House**, in which Grandfather Pollexfen lived, overlooks the quay. **Merville** to which he retired is now Nazareth Home. **Stephen Street - Ulster Bank Building** - remembered by Yeats' when collecting his Nobel Prize for Literature in 1923. The windows of the Swedish Royal palace reminded him of the 1863 Classic Renaissance building in Sligo. Directly in front of the **Ulster Bank** is a **bronze statue** of the poet erected in 1989 to commemorate the 50th anniversary of his death. Sligo County Museum displays the Nobel Medal awarded to Yeats and a collection of unpublished letters. **Wine Street** and **Adelaide Street** stands an impressive building, once part of the extensive property of the Pollexfen family. On the roof can be seen the **turret** from which William Pollexfen trained a telescope on his ships going in and out of Sligo's port. **John Street** **The Church of Ireland Cathedral of St John the Baptist** designed in 1780 by German architect Casella. It is here that Yeats' mother, Susan Pollexfen, married young barrister John Yeats in 1863. A brass memorial to her can be seen on the wall near the pulpit. Yeats' grandfather supervised the building of his own mausoleum in the adjoining churchyard.

Driving Tour of Yeats' Country

WB Yeats called Sligo 'The Land of Hearts Desire' and its beauty, archaeology and folklore filled his early poetry. A trip around Yeats' Country illuminates the poet's words. One notable tour is to Lough Gill where the renowned Isle of Innisfree is located. "Where dips the rocky highland of Sleuth Wood in the lake, there lies a Leafy Island where flapping herons wake the drowsy water-rats". For suggested routes visit www.discoverireland.ie/yeatsrail

Attractions



Sligo has a wealth of attractions to offer ... take a tour of the magnificent 1830's Lissadell House, watch eagles soaring ...

Carrowmore Megalithic Cemetery

Carrowmore, Sligo
+353 (0)161 71734

carrowmoreomb@opw.ie

This is the largest cemetery of megalithic monuments in Ireland and is also among the country's oldest, with monuments ranging from five and a half thousand to six and a half thousand years old.

Coleman Irish Music Centre

Gurteen, Co Sligo
+353 (0)71 9182599
+353 (0)71 9182602

info@colemanirishmusic.com

www.colemanirishmusic.com

The Michael Coleman Heritage Centre draws together the many strands of the South Sligo musical tradition.

Dolly's Cottage

Strandhill, Co Sligo
+353 (0)71 9187564

Dolly's Cottage is a 200-year-old traditional thatched cottage, the only one of its kind in the area, which is open to the public. It is a stone built cottage with two rooms and a loft with original walls, roof, roof beams, fireplace and porch bed.

Drumcliffe Round Tower And High Cross

Drumcliffe, Sligo

Monastic settlement dates from 574AD. The principal visible remains are of Sligo's only round tower, a high cross and a fragment of a plain high cross. The high cross is an excellent example of a figure sculpted cross and dates from the 10th century.

Eagles Flying / Irish Raptor Research Centre

Portlough, Ballyvaughan, Co Sligo

+353 (0)71 9189110

+353 (0)71 9189110

eaglesflying@opw.ie

www.eaglesflying.com

Ireland's biggest sanctuary for birds of prey and owls offers you impressions of majestic raptors soaring over beautiful locations.

Excalibur Inishmurray Tours

Drin Castle, Mullaghmore, Co Sligo

+353 (0)71 9142738 - Keith

joemcgowan@sligoheritage.com

www.sligoheritage.com

Experience the romance and mystery of Inishmurray Island aboard the fast-riv Excalibur. Joe, author of Inishmurray: Island Voices' or Keith, will reveal the secrets of the Island as you travel.

Gilligan's World

Lavagh Nr., Tubbercurry, Sligo

+353 (0)71 9130286

ladyamel@eircom.net

www.gilligansworld.com

Knocknashoe, Legendary Hill of the Fairies, one of the 7 sacred hills in Ireland. Fun for school, coach tours, birthday parties, family groups and overseas visitors.

Lissadell House

Ballinadull

+353 (0)161 63150

www.lissadellhouse.com

Take a tour of this magnificent 1830's house. Visit the gardens and enjoy Countess Markievicz Exhibition.

Sligo Abbey

Abbey St., Sligo

+353 (0)71 9146406

sligoabbey@opw.ie

13th Century Dominican Friary, contains a great wealth of carvings including Gothic and Renaissance tomb sculpture, well preserved cloister and the only sculptured 15th century high altar to survive in any Irish monastic church.

W.B. Yeats Grave & Drumcliffe Church

Drumcliffe, Sligo

+353 (0)71 9144926

+353 (0)71 9140273

info@drumcliffe.ie

www.drumcliffe.ie

Drumcliffe, final resting place of W.B. Yeats and site of a 6th century Columban monastery. This beautiful site which nestles under Benbulbin Mountain has an exciting range of activities for the visitor.

Festivals & Events

The highest calibre of international, national and local artists grace Sligo venues in a sparkling series of arts and cultural events throughout the year.

From music to sports - Sligo is the place to be!

Cultural Centres

The Factory
Hawkswell Theatre
Coleman Music Centre
Fred Finn Branch of
Comhaltas Ceoltoiri Eireann
Model: Niland

Sligo Art Gallery
Sligo Folk Park
Sligo Heritage & Genealogy
Taylors Art Gallery
Yeats Society
Gaiety Cinema

Events

January

Yeats International Winter School

February

Vibrant Contemporary/Irish Art Exhibition
Sligo Art Gallery

March

Western Drama Festival, Tubbercurry
17 March St. Patrick's Day Festivals
Sligo Rowing Head of the River Event
Feis Shligigh

April

West of Ireland Amateur Open Golf Championship
Yeats Country Music Festival
Feis Ceoil
Sligo Races
Lough Talt Walking Festival

May

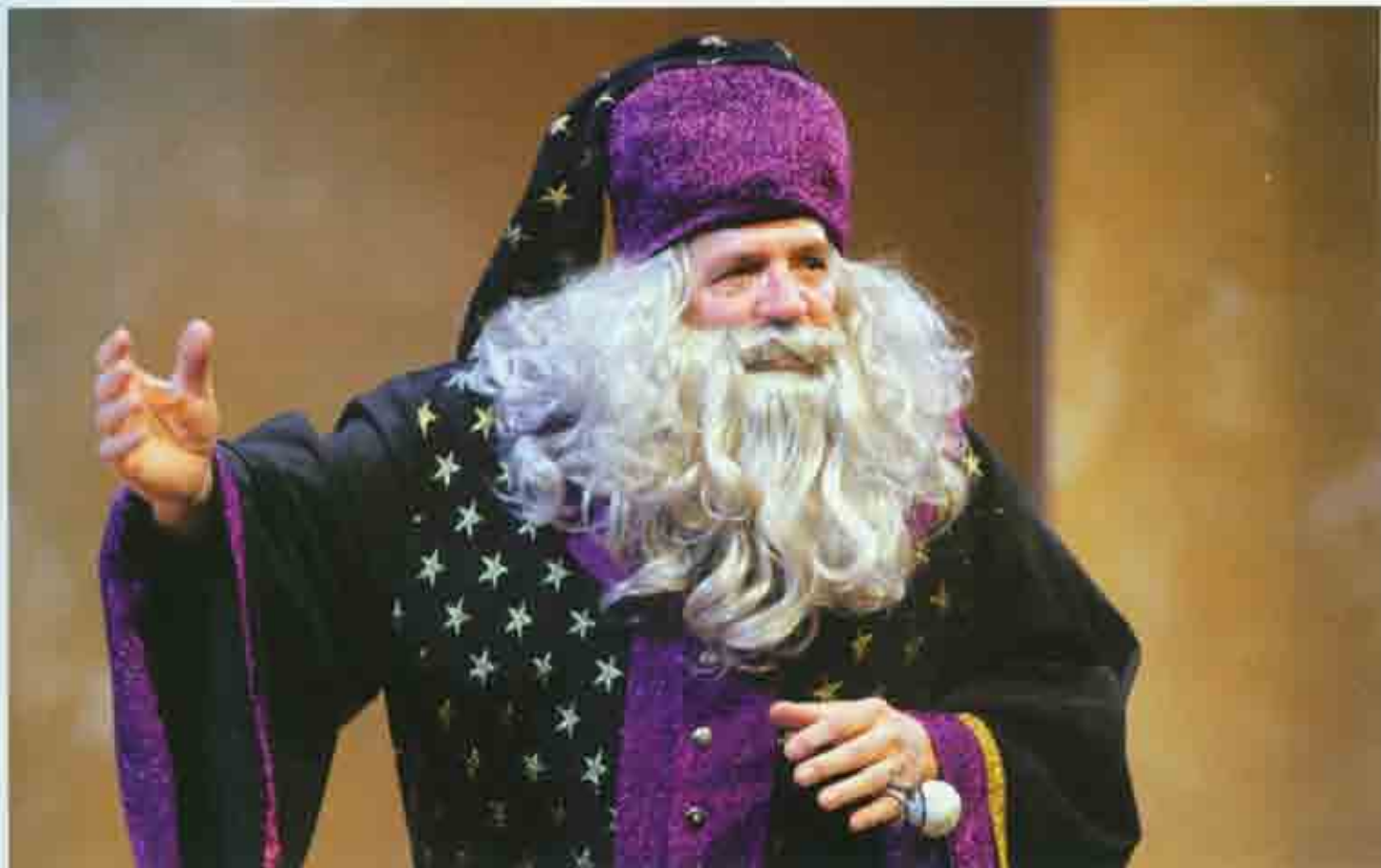
Sligo Races
Ceiluradh an Earraigh, Gurteen
Con-Brio Vogler Spring Festival
Summer Sprint Rowing
Sean N6s Festival

June

Sligo Races
Sligo County Fleadh
Culleenamore Races
Riverstown Vintage Festival
Enniscrone Open Golf Week



Festivals & Events



July

Cairde Summer Festival
Sligo Races
Seisun - Summer Music Sessions, Gurteen
South Sligo Summer School, Tubbercurry
James Morrison Traditional Music Festival, Riverstown
Yeats International Summer School
Sligo Stages Rally
Coolaney Summer Festival

August

Yeats International Summer School
Seisun - Summer Music Sessions, Gurteen
Sligo Heritage Week
Sligo Races
Queen Maeve Summer School of Traditional Music, Song and Dance
Ballymote Heritage Weekend
Tubbercurry Old Fair Day Festival
Enniscrone Black Pig Festival
The Annual Warriors Run, Strandhill
Coleman Traditional Festival, Gurteen
Agricultural & Horse Show, Gurteen
Sligo International Jazz Summer School

September

Sligo Festival of New Music
The Strandhill Guitar Festival

October

Sligo Festival of Baroque Music
Ballintogher Annual Feis
Sligo Live Festival
Sligo International Choral Festival
Halloween Camps at Lissadell House

November

Performing Arts at the Hawkswell
John Egan Annual Traditional Festival

December

All Weather Santatown at Riverstown
Christmas Camp at Lissadell House
Santa's visit to Lissadell House
The Annual Christmas Pantomime

For up-to-date information on all festivals and events please call or log on to:

+353 (0)71 9161201
www.sligotourism.ie
www.discoverireland.ie/sligo

The Arts & Entertainment

The merry love the fiddle and the merry love to dance...



Professional Arts Institutions have ongoing programmes all year round:

- Sligo Art Gallery
- Model:Inland
- The Factory: Performance Space
- Hawkswell Theatre

Mondays

The Harp Tavern	Sligo Town	Traditional
The Strand Bar	Strandhill	Traditional
Teach Murray	Gurteen	Traditional Singing Sessions

Tuesdays

The Stables	Sligo Town	Karaoke
O'Connell's Pub	Ballisodare	Last of Every Month Traditional Irish Music Sessions
Sovery Hall	Ballinaghy	Set Dancing
Barry's Public House	Grange	Trad. Music, Cads & Set Dancing
Rosin Dobb's	Gurteen	Singing Sessions
Foley's	Sligo Town	Traditional Session

Wednesday

Mc Garrigles	Sligo Town	Traditional
Mc Hughie	Sligo Town	DJ
The Binder Collie	Tourlestrane	Traditional Session
Shoot The Crowe Pub	Sligo Town	Live Music
Perry Hayden's	Ballymote	Singing Session
Foley's	Sligo Town	Traditional Session

Thursday

Earleys	Sligo Town	Traditional
Mc Garrigles	Sligo Town	Traditional
Fiddlers Creek	Sligo Town	Live Music
Fureys	Sligo Town	Live Music
Tiglies	Gurteen	Singing Session
Coolera House	Strandhill	Set Dancing
Killoran's	Tabbercurry	Set Dancing
Foley's	Sligo Town	Traditional Session

Friday

The Stables	Sligo Town	Traditional
Earleys	Sligo Town	Traditional
Mc Garrigles	Sligo Town	Jazz
Fiddlers Creek	Sligo Town	DJ
Mc Hughie	Sligo Town	DJ
Reenan's Bar	Tabbercurry	Last of Every Month Traditional Sessions
Duckin's Bar	Ballinacarrow	Traditional Music Session
Barry's Public House	Grange	Live Music

Saturday

The Harp Tavern	Sligo Town	Live Music
The Stables	Sligo Town	Live Music
Earleys	Sligo Town	Live Music
Foleys	Sligo Town	Traditional
The Irish House	Sligo Town	Live Music
Fiddlers Creek	Sligo Town	DJ
Mc Hughie	Sligo Town	DJ
O'Donnell's	Clifoney	Last of Every Month Traditional Sessions
Rosin Dobb's	Gurteen	Singing Sessions
Barry's Public House	Grange	Live Music

Sunday

Earleys	Sligo Town	Traditional
The Harp Tavern	Sligo Town	Jazz
Earleys	Sligo Town	Live Music
Donaghys	Sligo Town	Traditional
Clarence	Sligo Town	Jazz
Tobergal Linn Café	Sligo Town	Traditional
Fergadans	Sligo Town	Traditional Session
Donaghys Bar	Sligo Town	
Perry Hayden's	Ballymote	Singing Session
Barry's Public House	Grange	Live Music

Please contact local Tourist Information Office for further updates or changes

Getting Here

Getting Around

Choose from a selection of buses, trains and internal flights, car hire, taxis, plus a network of roads and motorways, you'll find Sligo an easy place to get around

Driving Distance

Dublin	208 km
Belfast	202 km
Ireland West International Airport, Knock	71 km
Shannon	212 km
Larne	253 km
Rosslare	313 km
Dun Laoghaire	227 km

Air

Sligo Airport

www.sligoairport.com

Ireland West Airport Knock

www.iwairport.com

Donegal Airport

www.donegalairport.ie

City of Derry Airport

www.derryairport.com

Belfast International Airport

www.belfastairport.com

George Best Belfast City Airport

www.belfastcityairport.com

Dublin International Airport

www.dublin-airport.com

Shannon International Airport

www.shannonairport.com

Car Hire

Avis Car Rental www.avis.ie (located at Sligo Airport). For more information on other car hire in the region, please visit our Airport websites (listed above).

Enterprise Rent a Car www.enterprise.ie

Hertz Rent a Car www.hertz.ie

Sea

Dublin, Dun Laoghaire, Belfast & Larne are served by car ferry from Britain.

Rosslare and Cork are served by car ferries from Britain and France.

Irish Ferries

www.irishferries.com

P&O Ferries

www.poirishline.com

Stena Line

www.stenaline.com

Brittany Ferries

www.brittany-ferries.ie

Rail

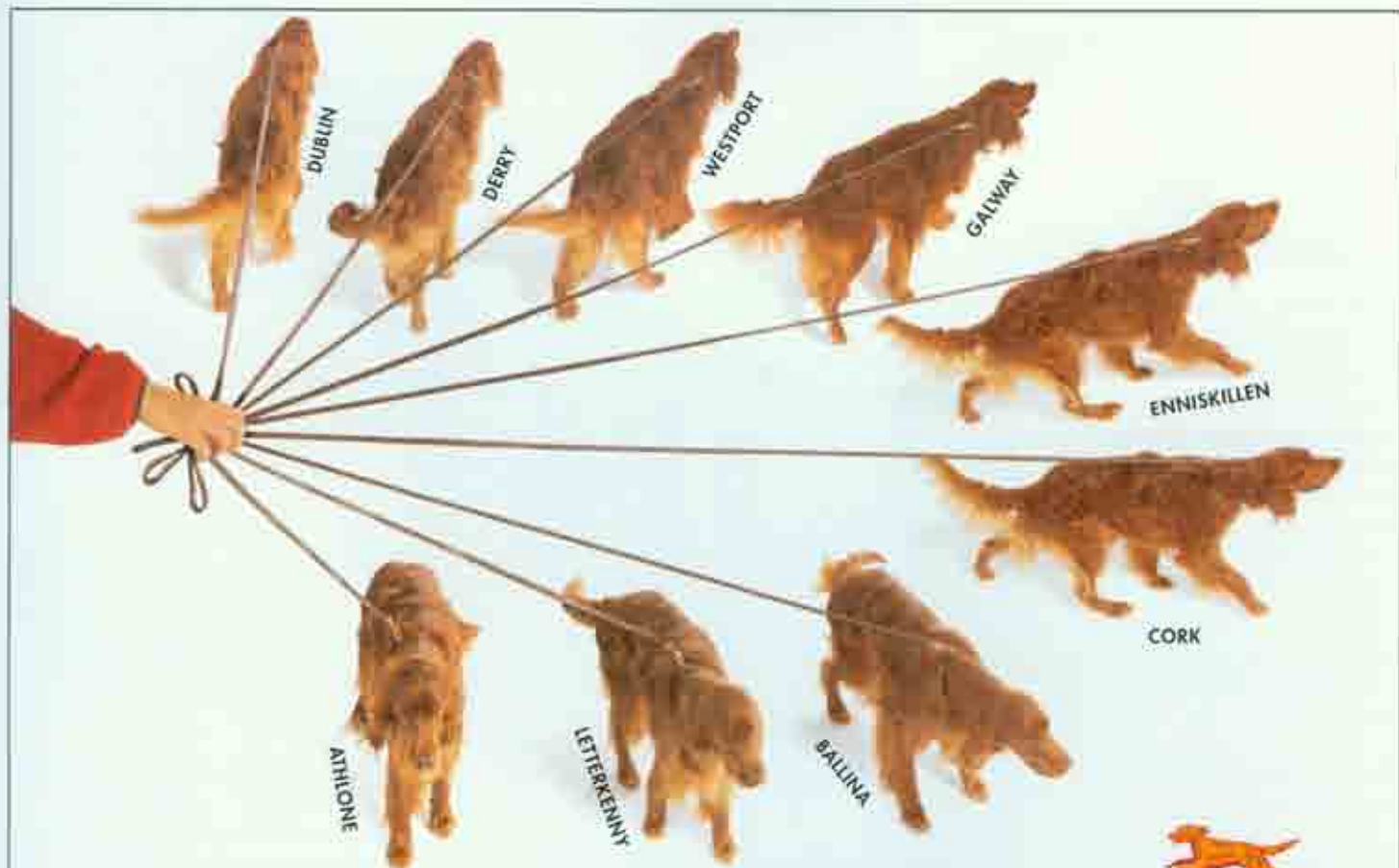
Iarnród Éireann – Irish Rail Network

www.irishrail.ie

Bus Éireann

National bus company serving all main towns and cities.

www.buseireann.ie



47 departures daily from Sligo City

Discover country-side that you've before. Europe's first integrated network in low-bidding facility, and another European first with an bus exhibition of a-licking. Bus Éireann – innovative in standard.

Bus Éireann

Buy on-line at www.buseireann.ie
info@buseireann.ie

County Map



Discover Enniscrone

make it yours

Enniscrone, is a lively Seaside Resort which offers the visitor a wide range of activities for all age groups including almost 5 km of Safe beach, World famous seaweed baths, a marvellous 27 hole golf links, Waterpoint our famous all-weather Aqua Leisure Centre, a supervised playground, amusement park for the children, Crazy Golf, Pitch and Putt and Tennis Court, Sea and River Angling and much more.

If it is a relaxing break, a fun family holiday or a weekend of craic, Enniscrone is the perfect location for all

**Ireland's
Premier
Seaside Resort**



www.discoverenniscrone.com

Fly to Sligo

Capital of Ireland's Northwest!

...we're
only a short
hop away



Sligo
Dublin
Manchester
London



Agents for
AerArann
AVIS

SLIGO
airport

www.sligoairport.com

Accommodation & Visitor Services



Sligo Offers a wide diversity of excellent approved accommodation providers ranging from contemporary, luxury 4* Hotels to old world Castles. Choose a rural or urban experience; enjoy a break in an Irish Home and sample a true taste of Ireland with a modern Irish family. The choice is endless but the quality assured; Sample a low impact stay at our EU Flower Certified premises offering environmentally low impact holidays.

If you prefer the great outdoors sleep under the stars at Sligo's Caravan & Camping sites all located in areas of stunning beauty and backpackers have a choice of excellent holiday hostels.

And always the 100,000 welcomes!

Sligo Tourist Information Office

For further details please contact:

Fáilte Ireland North West,

Temple Street, Sligo.

Tel: + 353(0) 71 91 6120

Fax: + 353 (0) 71 91 60360

Email: northwestinfo@failteireland.ie

www.discoverireland.ie/sligo

(Year Round)



Mullaghmore



www.discoverireland.ie/sligo