

**Von zwei bis 22 (Personen) –  
Neun tolle, bezahlbare luxuriöse Ferienhäuser  
im Südwesten Irlands:  
**CASHELFEAN HOLIDAY HOUSES****

Aber sehen Sie selbst auf den folgenden Seiten

(Diese Broschüre wird von CHH nicht mehr aufgelegt, wir haben ein hier ein altes Original eingescannt und für unsere Gaeltacht Kunden zur Verfügung gestellt. Aktuelle(re) Preislisten am Ende. Keinen Schock kriegen, sondern Preis einfach nur durch die Personenzahl teilen. Die Häuser sind allesamt ihren Preis wert)



**Das war ein guter Tipp? Dann reservieren, buchen Sie bitte über uns – von der (überschaubaren) Vermittlungsgebühr finanzieren wir solchen Service...**

Aber frühzeitig! Gut und gerne sind die Häuser auch schon mal 1 Jahr vorher ausgebucht!



**Gaeltacht Irland Reisen**  
Schwarzer Weg 25  
47447 Moers

[kontakt@gaeltacht.de](mailto:kontakt@gaeltacht.de)  
[www.gaeltacht.de](http://www.gaeltacht.de)

**Tel.: 02841 930 111**

## A-Z OF AMENITIES AND FACILITIES IN OUR AREA

### ARCHAEOLOGY

Bantry  
Schull - Weekly guided tours

### BICYCLE HIRE

Glengarriff - Bantry - Schull

### BUS & CAR HIRE

Ballydehob - Glengarriff  
Scenic trips of Cork/Kerry region

### BOAT HIRE

Sailing Boat - Schull  
Row Boat - Ballydehob

### BOAT CHARTER

Glengarriff and Schull  
Shore and Deep Sea Angling

### BOAT TRIPS

Glengarriff - to Garnish Island,  
Whiddy Islands and trips around  
Glengarriff Harbour

Schull - to Cape Clear and  
Sherkin Island,

and around the Fastnet Rock

### CANOEING

Glengarriff - Bantry - Schull

### DIVING

Glengarriff - Bantry - Schull -  
Baltimore

### DIVING RANGE

Ballydehob, Rosscarbery

### FISHING

River Fishing - Glengarriff  
Lake Fishing - Glengarriff/  
Skibbereen  
Shore Fishing - All along the coast

### GOLF

Glengarriff - 9 hole  
Bantry - 18 hole  
Skibbereen - 18 hole  
Kemmure - 18 hole

### GARDENS

West Cork Garden Trail

### HANG GLIDING

Ballydehob

### HILL WALKING

Glengarriff, Beara Way - Walking  
through the countryside  
State Forest/National Park -  
Cashelfean: Mount Gabriel -  
Mount Kid, Sheep's Head Way -  
Walking through the countryside

### HORSE RIDING

Bantry, Dumbleton

### INDOOR SWIMMING POOL

West Lodge Hotel, Bantry  
Bantry Cove Hotel

### LIBRARY

Bantry - Schull - Skibbereen

### PITCH & PUTT

Bantry - Schull

### PLANETARIUM

Schull

### PEDAL/ROW BOAT HIRE

Ballydehob

### PUB MUSIC

All local villages  
throughout the season

### SAILING

Schull - Baltimore -  
Castletownbere

### SANDY BEACHES

Glengarriff - Zetland Pier,  
Ardigole  
Cashelfean - Barley Cove

### SPORTS CENTRE

Skibbereen

### SQUASH

Bantry - Schull - Skibbereen

### TENNIS COURT

Kemmure - Bantry - Schull

### WINDSURFING

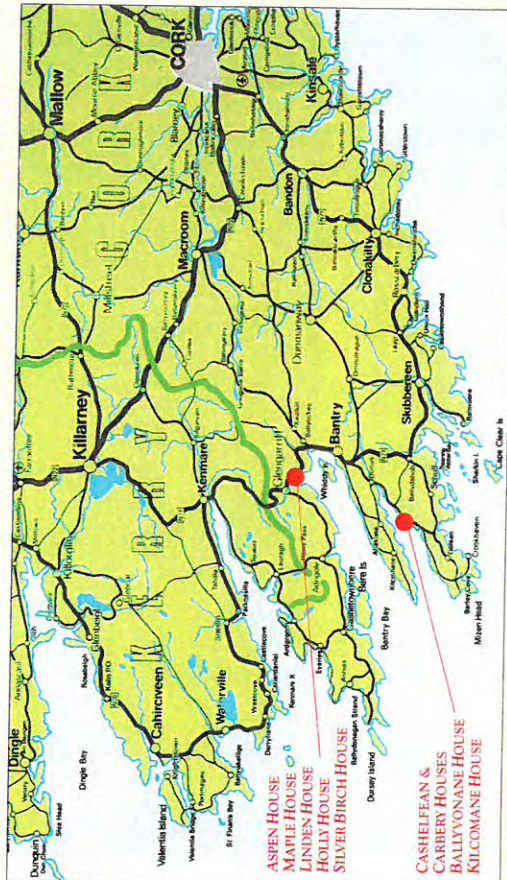
Schull - Castletownbere



# SOUTH WEST IRLANDS MOST EXCLUSIVE HOLIDAY HOUSES

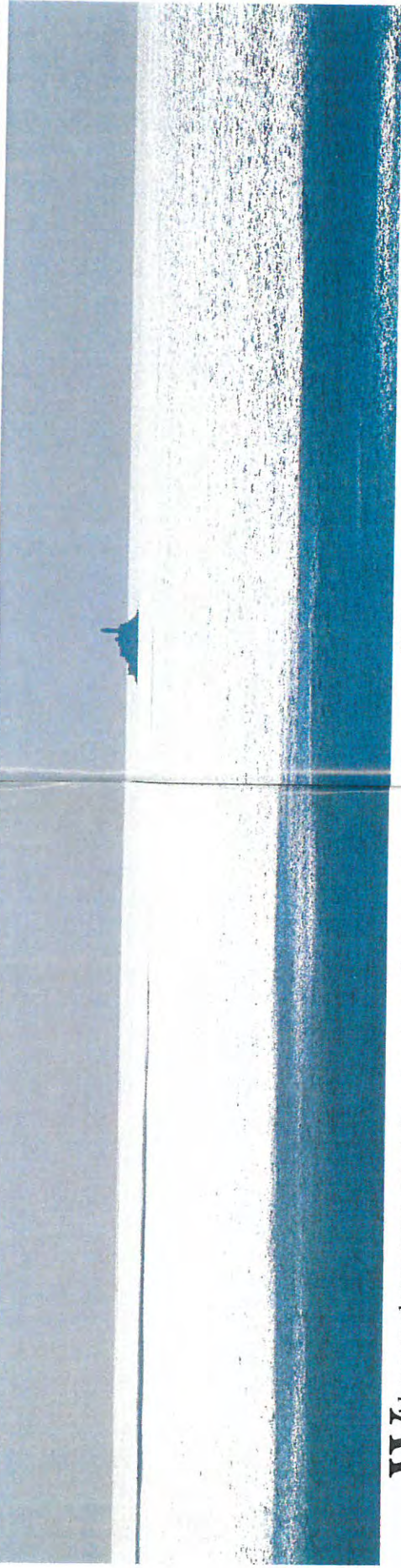


ASPEN HOUSE  
SILVER BIRCH HOUSE  
LINDEN HOUSE  
BALLYVONANE HOUSE  
CASHELFEAN &  
CARBERY HOUSES  
HOLLY HOUSE  
KILCOMANE HOUSE  
MAPLE HOUSE



CASHELFEAN HOLIDAY HOUSES, DURRUS, COUNTY CORK  
Office Tel. 027 61208, ISDN 027 62000 • Fax 027 61175, ISDN Fax 027 62012  
e-mail - [cncd@mdigo.ie](mailto:cncd@mdigo.ie) • website - <http://www.cashelfean.com>

## AT HOME WITH NATURE IN THE MOST PERFECT IRISH SETTING



With scenery that surpasses expectation, air as pure as larksong and an unhurried pace of life West Cork is the ideal place for a relaxing holiday. What makes this remote corner of Ireland so special is the beguiling way the landscape changes constantly with every turn of the road. Hidden coves, deserted sandy beaches, wild hillsides and primeval woods are part of the enchantment.

Cashelfean Holiday Homes fit naturally into the landscape of this most magical Irish coastline. With majestic mountains as a backdrop the self-catering holiday homes overlook sheltered Glengarriff Harbour studded with secret islands, or the quiet waters of Dunmanus Bay.

Scattered among tranquil hills with breathtaking views of the sea the houses combine tradition with luxury. Built of local stone or whitewashed they reflect the skill of generations of craftsmen. Great care has been taken with the creation of these charming cottages and farmhouses. All the materials are natural and most come from the locality: blue-grey, Irish slate which changes colour with the weather for the roofs, ceramic flagging for the floors, locally crafted oak and pine for furniture.

Even the finishes are natural, timber is polished with beeswax, plants have been used in subtle dyes and the paint is organic. Every detail from dry stone walls to porches - has its place in local custom and each of the houses is in perfect accord with its surrounding fields or sheltering trees.

Equipped to four star standards, the houses offer the best of both worlds with welcoming open fires and every modern convenience. Both housekeeping and catering services can be provided as required. Ideal for a break with friends, a family reunion or a novel conference setting the accommodation ranging from 11 to 2 bedroomed homes is flexible and designed to meet every need.

There is a wealth of things to do in the area. The long sheltered inlets of the coast offer pleasant sailing, the rivers promise trout and salmon. Irish horses are second to none and there is a choice of pony trekking centres and riding schools. Fine golf courses, mountain climbing and sea angling are also among the options.

There is a soothing quality of life in Ireland. People seem to have all the time in the world to befriend you. The pubs are welcoming and in the wake of Ireland's culinary renaissance there is no shortage of excellent restaurants. Ingredients which are the envy of Europe, local fish and shell fish, beef from Cashelane Farm and sweet mountain lamb become memorable meals with a distinctive Irish flavour. With its gentle climate, friendly people and stupendous scenery Ireland will charm you.

## CASHELFEAN HOUSE I AND Ia



4

This traditional white-washed farmhouse retains its original charm. The old stone walls and huge open fireplace which takes up most of the gable wall have been kept just as they were. Only a couple of extra windows have been added to take advantage of the beautiful views of Dummanus Bay. With its cosy atmosphere and open plan living area this is one of our smaller houses. The extension - a typical feature of Irish farmhouses - can be rented separately or as additional accommodation.

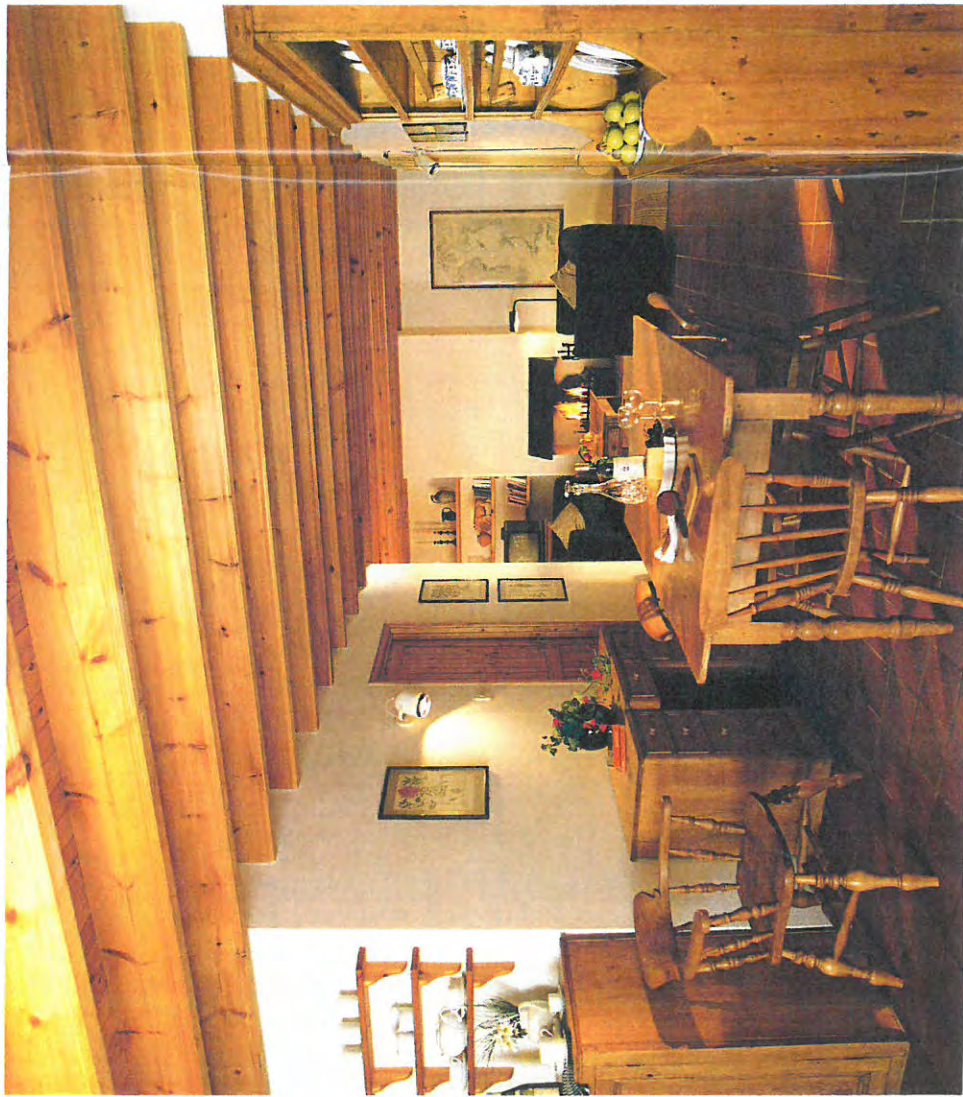


5



Two-storey house. Downstairs: Kitchen, dining and sitting area, open fire, terrace. Upstairs: Two double bedrooms, bathroom. (Electric heating, washing machine/dryer, TV, telephone). Extension (1a) also to let separately; Single room apartment, with kitchen/dining, shower, toilet, open fire, terrace.

## CASHELFEAN HOUSE II



6

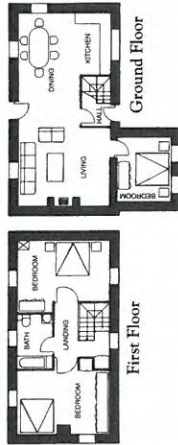
**R**ight beside the sea on the pastures that slope down to Dunmanus Bay this is one of our most popular houses. Stone built and full of character the house has an extension in the traditional style which provides a third bedroom. There are fabulous views of the sea from every room and the house has been painted throughout with organic colours. Combining the best of both worlds this secluded home has every convenience from telephone to dishwasher and all the romantic appeal of a remote farmhouse.



7



Two-storey house.  
Downstairs: Kitchen, dining and sitting area, open fire, double bedroom, toilet, terrace. Upstairs: 2 double bedrooms, bathroom. (Oil system central heating, washing machine/dryer, dishwasher, TV, telephone).



# CASHELFEAN IV



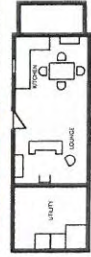
**T**his traditional farmhouse has been completely renovated with modern interior but without losing it's old style charm and character, sheltered by trees with magnificent views of Dunmanus Bay and Sheep's Head peninsula. It has a charming entrance porch, open plan living/dining area with cosy open fire as well as central heating and fully equipped kitchen. The house is surrounded by an old fashioned farmhouse style garden with spacious terrace at the back where you can sit out and enjoy the views.

# CASHELFEAN IV

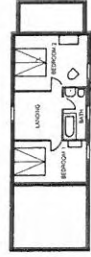


Downstairs: Entrance porch, open plan kitchen/dining which includes: oven/hob, dishwashers, microwave and fridge. Living room with open fire, TV, DVD and telephone. There is an adjoining utility room with washing machine/dryer.

Upstairs: 1 double bedroom, 1 twin bedroom (with 2 single beds) and bathroom.



Ground Floor



First Floor

# CARBERY HOUSE I



8

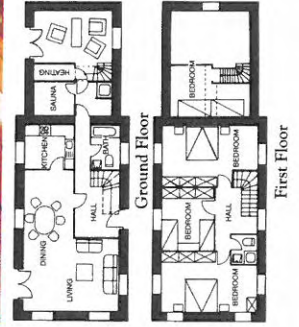


9



Situated on the peaceful hillside of Cashelane Farm overlooking Dunmanus Bay this is one of our larger houses. Traditional in style it is built of old stone from ruined cottages. From the sheltered terrace you can look out over the bay to distant hills or admire the pedigree cattle grazing nearby. The surrounding lawns make a safe playground for children and the sea is just a short stroll away across the fields.

Large two-storey house. Downstairs: Kitchen, spacious dining and sitting room, open fire, bathroom, large sauna and playroom, terrace. Upstairs: 4 double bedrooms, shower and toilet. (Oil system central heating, washing machine/dryer, dishwasher, TV, telephone).



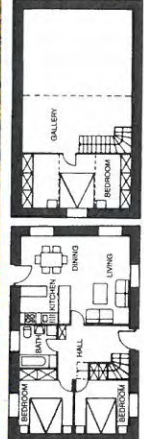
# CARBERY HOUSE II



With its gallery and bedroom under the sloping eaves this house is full of character. Adjoining Carbery I to form an L and furnished with antique pitch pine the house has all the charm of a cottage.



Downstairs: Kitchen, dining and sitting room, open fire, bathroom, 2 double bedrooms, terrace.  
 Upstairs: Loft Gallery, 1 double bedroom.  
 (Oil system central heating, washing machine/dryer, dishwasher, TV, telephone).



Ground Floor First Floor



## CARBERY HOUSE III



12

This house lies among the pastures of Cashelane Farm, where black Aberdeen Angus and white Charolais cattle are bred. There is a picturesque panorama from the house onto Dunmanus Bay, and to the west of the Atlantic Ocean. It is only a few kilometres from Carbery 3 to the famous fishing port of Schull - and 20 minutes drive to the wonderful sandy beaches at Mizen Head Peninsula.

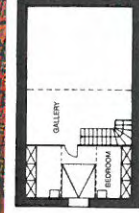


13

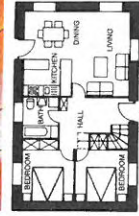


Downstairs: Kitchen, dining and sitting room, open fire, bathroom, 2 double bedrooms, terrace.

Upstairs: Loft Gallery, 1 double bedroom. (Oil system central heating, washing machine/dryer, dishwasher, TV, telephone).



First Floor



Ground Floor

## CARBERY HOUSE IV



14



15



Set amid the seclusion of Cashelane Farm this traditional Irish house is snugly built with 60 cm thick stone walls. From the dining room you can look out over distant hills and islands of spectacular Dumanus Bay. As in all our houses organic materials have been used wherever possible.

# CARBERY HOUSE IV



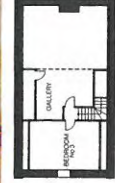
16

**W**ith an open fire and furniture made by local craftsmen the interior is warmly welcoming. And the well equipped kitchen has every modern appliance. Just 200 metres away there is a small trout lake specially reserved for our guests.



17

Downstairs: Kitchen/dining room, living room, open fire, bathroom, 2 double bedrooms (1 with bathroom en suite), terrace. Upstairs: Loft Gallery, 1 double bedroom, (Oil central heating, washing machine/dryer, dishwasher, microwave, TV, telephone).



First Floor



Ground Floor

# ASPEN HOUSE



18

The grounds of Aspen House lie in the beautiful Dromgarriff Estate amid 96 acres of meadows and woodland of over a thousand trees which were planted a century ago. Just 2 minutes from the friendly village of Glengarriff Aspen's site among sheltering trees has its own 2 kilometers of coastline, a private boat slip and a 9 hole golf course. Traditionally built of old stone the house is full of character with an open fire in the living area.

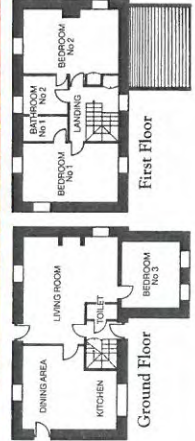


19



Large two storey house.

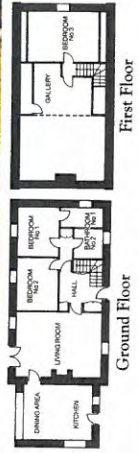
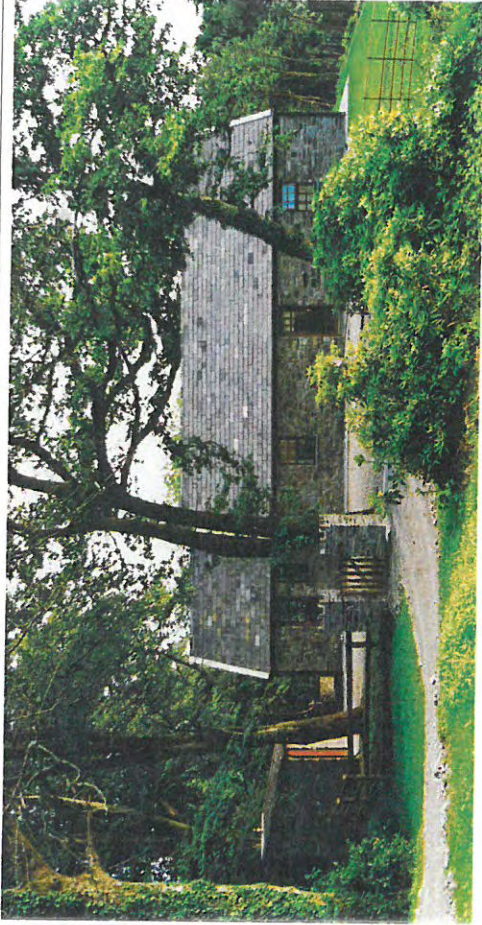
Downstairs: Kitchen/dining room, sitting room, open fire, 1 double bedroom, toilet, terrace. Upstairs: bathroom, 2 double bedrooms each with bathroom en suite. (Oil system central heating, washing machine/dryer, dishwasher, TV, telephone).



# MAPLE HOUSE

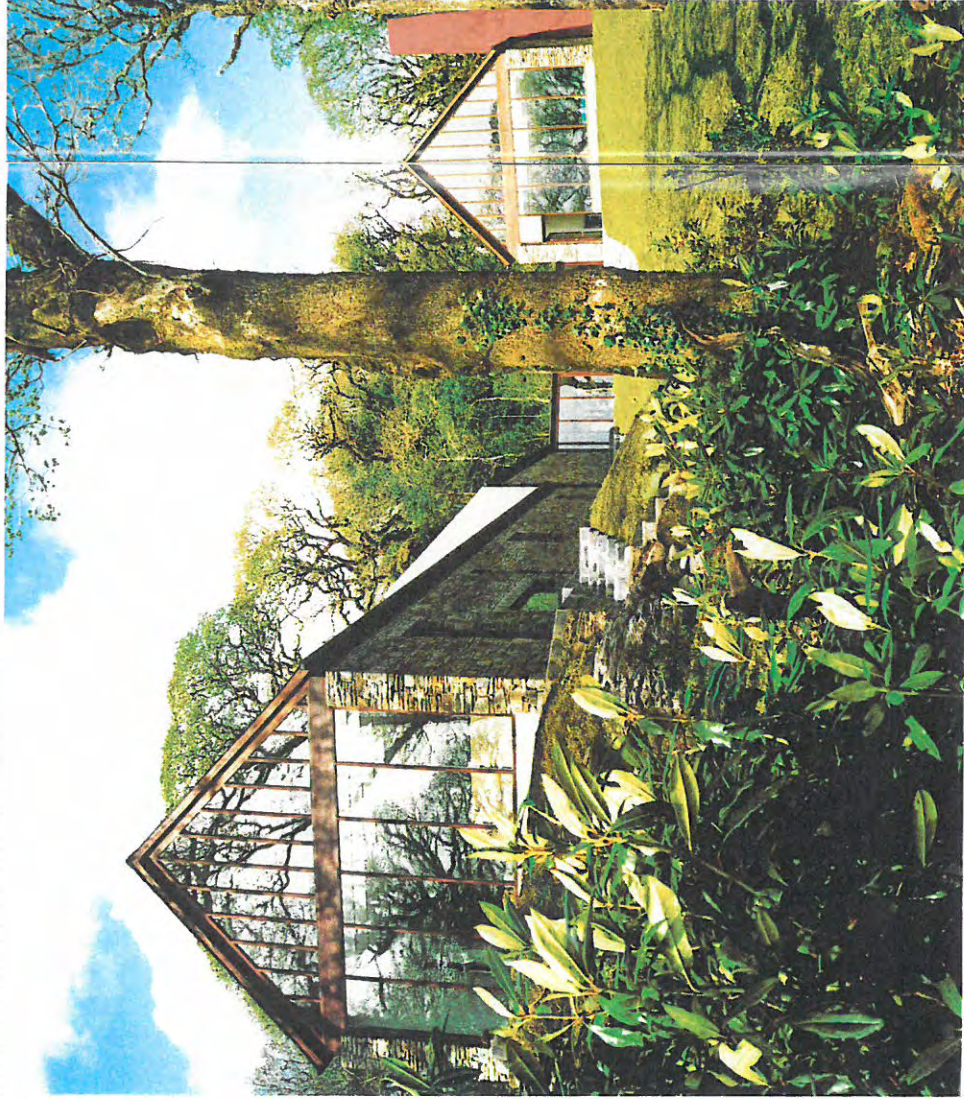


A secret Victorian garden provides the romantic setting for Maple House. The wild gardens with steps down to a fish pond once belonged to the 1862 Roches Royal Hotel. The hotel has vanished and only the old garden known as the "Rockery" with its exotic trees and stone steps remains. The secluded house has views across the Dromgarriff Estate golf course and its own pathway to the shore overlooking Garnish Island.

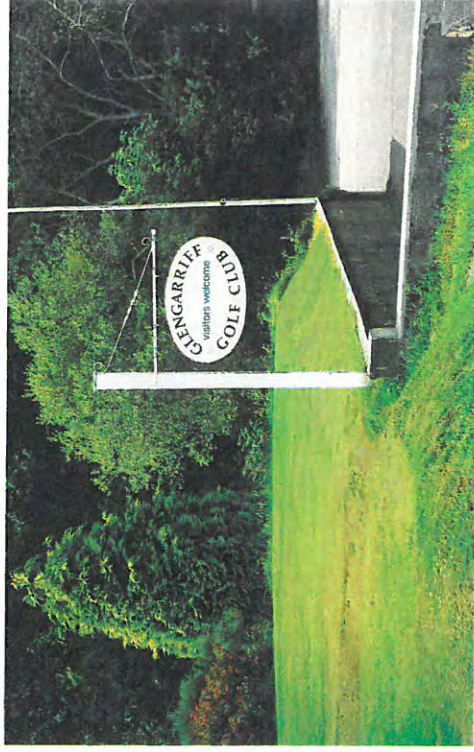


House with gallery upstairs.  
 Downstairs: Large kitchen/dining room, living room, open fire, bathroom, 2 double bedrooms (1 with bathroom en suite), terrace.  
 Upstairs: Loft Gallery, 1 double bedroom.  
 (Oil system central heating, washing machine/dryer, dishwasher, TV, telephone).

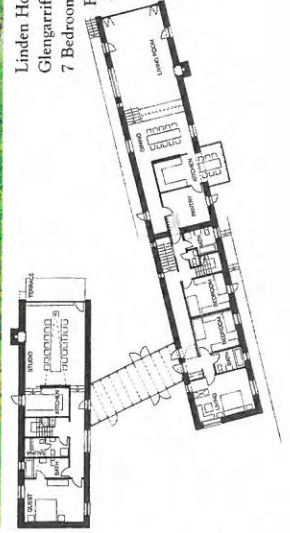
# LINDEN HOUSE



There are many beautiful castle hotels in Ireland, with their own golf courses, gardens and woods. But until now, people who prefer a more individual and independent life-style and a holiday home with this kind of luxurious ambience sought in vain. It is rare to find Irish cottages with the style and class of beautiful holiday villas like those in Tuscany or the Provence. That's why Linden House is unique in the Southwest of Ireland.



Linden House, on the seashore of Glengarriff Harbour. (West Wing 7 Bedrooms, South Wing 3 Bedrooms). Full communications facilities - telephone, fax, satellite TV and video.



## LINDEN HOUSE • SOUTH WING



24

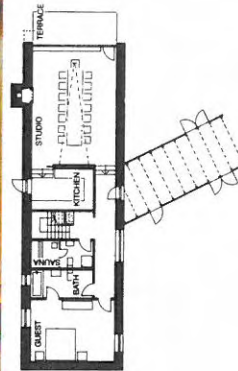
With its unique design and spectacular full length gable windows there is nothing to match Linden House available for rent in Ireland. The two wings of the house provide 10 bedrooms and each has a spacious living room where the gable windows have glorious views of Garnish Island. The lush beauty of Garnish's famous gardens owe their luxuriance to the benign effect of the Gulf Stream. In the mild climate of the area sub-tropical tree ferns, scarlet fuchsia and giant eucalyptus flourish side by side with ancient oaks and gigantic conifers.



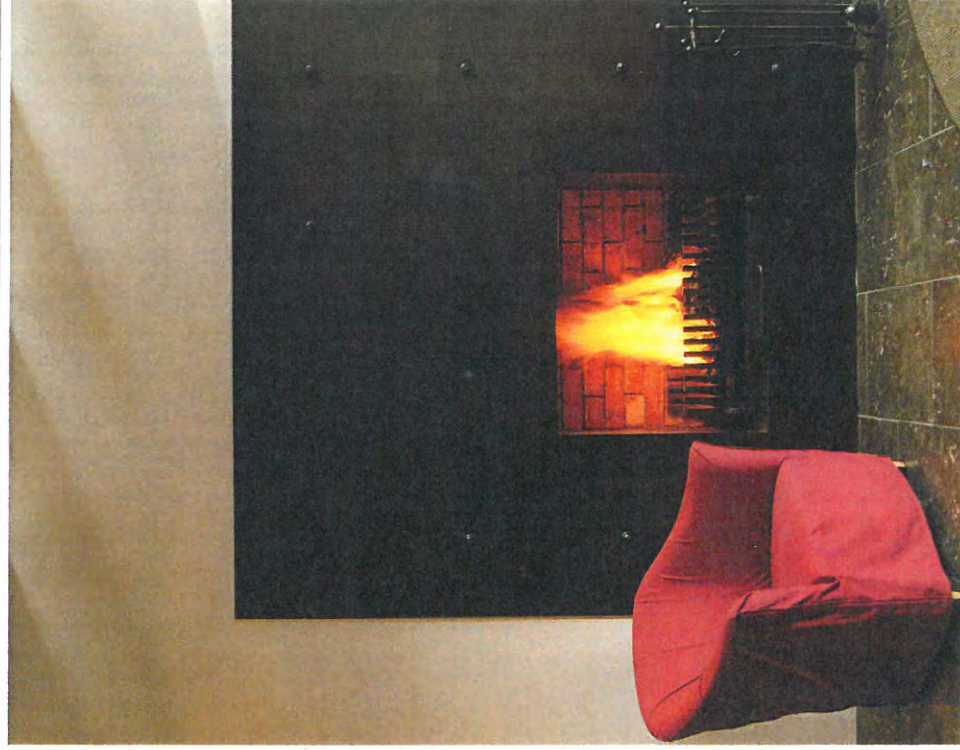
25



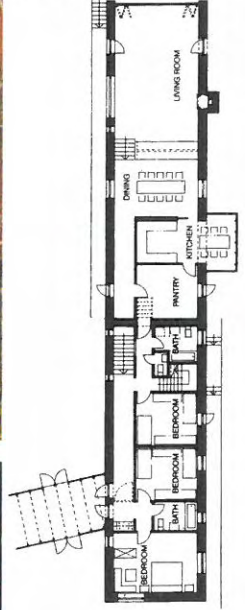
South wing - Downstairs: Kitchen (washing machine/dryer, dishwasher, microwave, fridge/freezer), dining/living area (TV, video, satellite, telephone), open fire, large double bedroom (with bathroom en suite), sauna, additional bathroom.  
Upstairs: 2 bedrooms and bathroom.



LINDEN HOUSE • WEST WING



West wing - Ground floor: Living room, open fire (TV, video, satellite, telefax, telephone), Kitchen (washing machine/dryer, dishwasher, microwave, fridge/freezer), dining room, breakfast area. (Pantry for use by catering staff only, with full catering facilities), 4 double bedrooms (1 with tea kitchen and dining area), 2 bathrooms, 1 toilet.  
 First floor: 3 double bedrooms, bathroom.





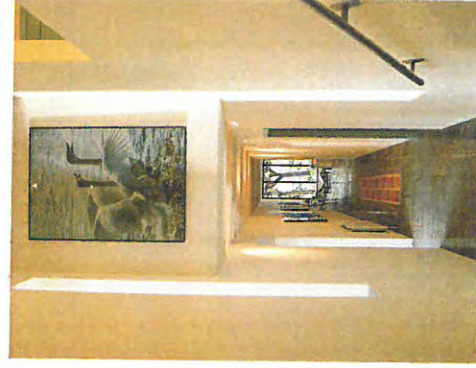
## LINDEN HOUSE • WEST WING



28

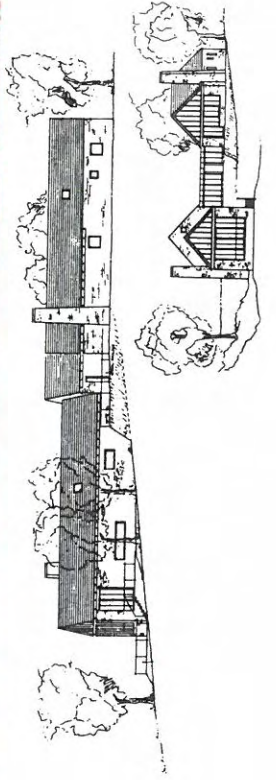
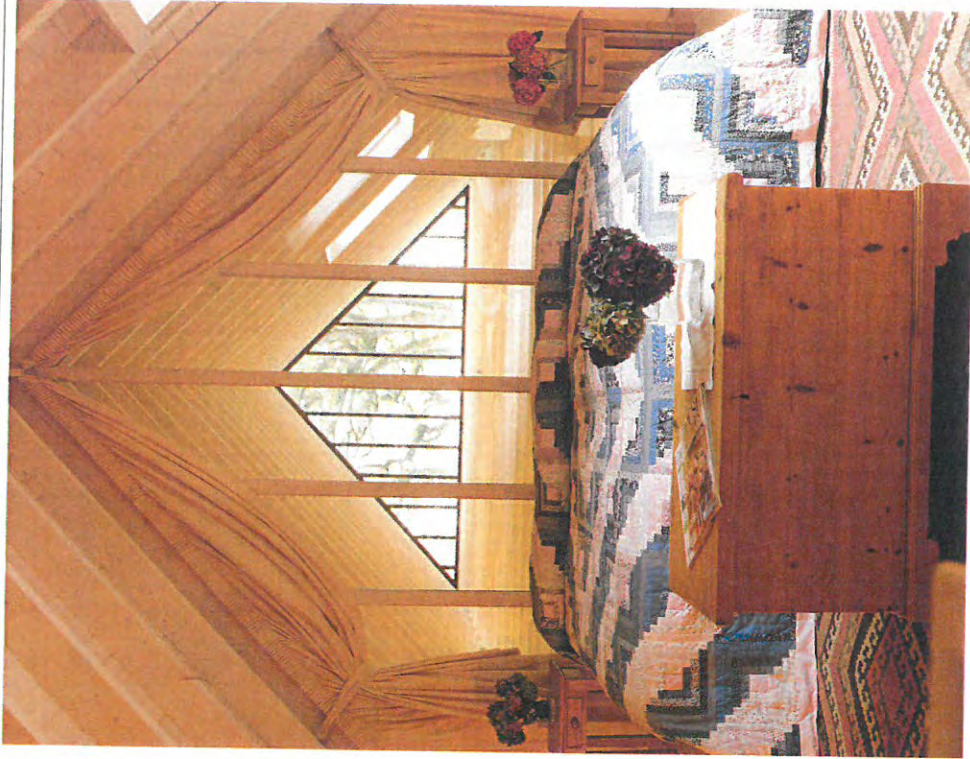


29



**L**inden House is the masterwork of a famous architect, designed to blend perfectly with the glorious landscape of trees, meadows and water. Built of mellow local stone, the house makes full use of organic materials - even the roof insulation is in natural cork. Built into the hillside the house is entered from the highest part of the site through a glass corridor. The long hallway of the west wing drops seawards through three different levels and leads to the gorgeous living room. Nearly 80 meters square the room has fabulous views of Glengarriff Harbour and Garnish Island.

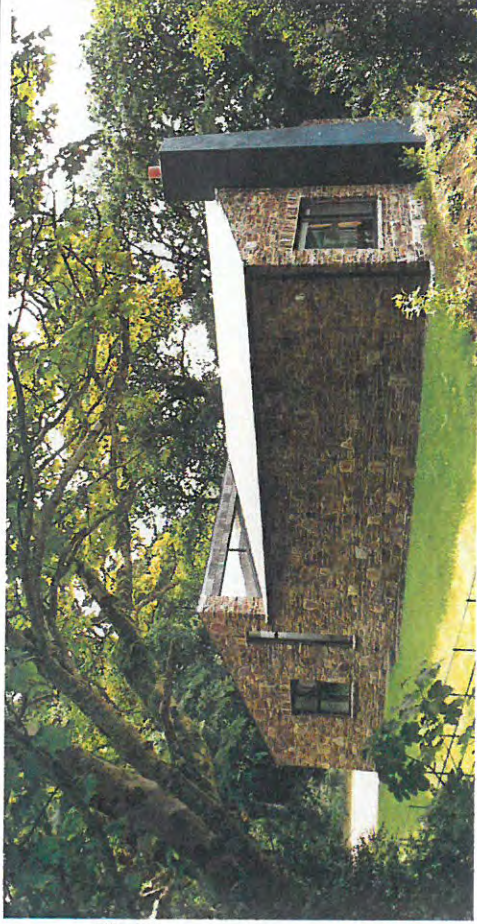
LINDEN HOUSE • WEST WING



# HOLLY HOUSE



32



33



**S**ituated adjacent to the golf course, overlooking Glengarriff Harbour, Holly House is our largest 3 bedroom house - luxuriously furnished in every detail. Complete with two terraces on different levels and surrounded by the estate's lush 150 year-old woodland.

# HOLLY HOUSE



34



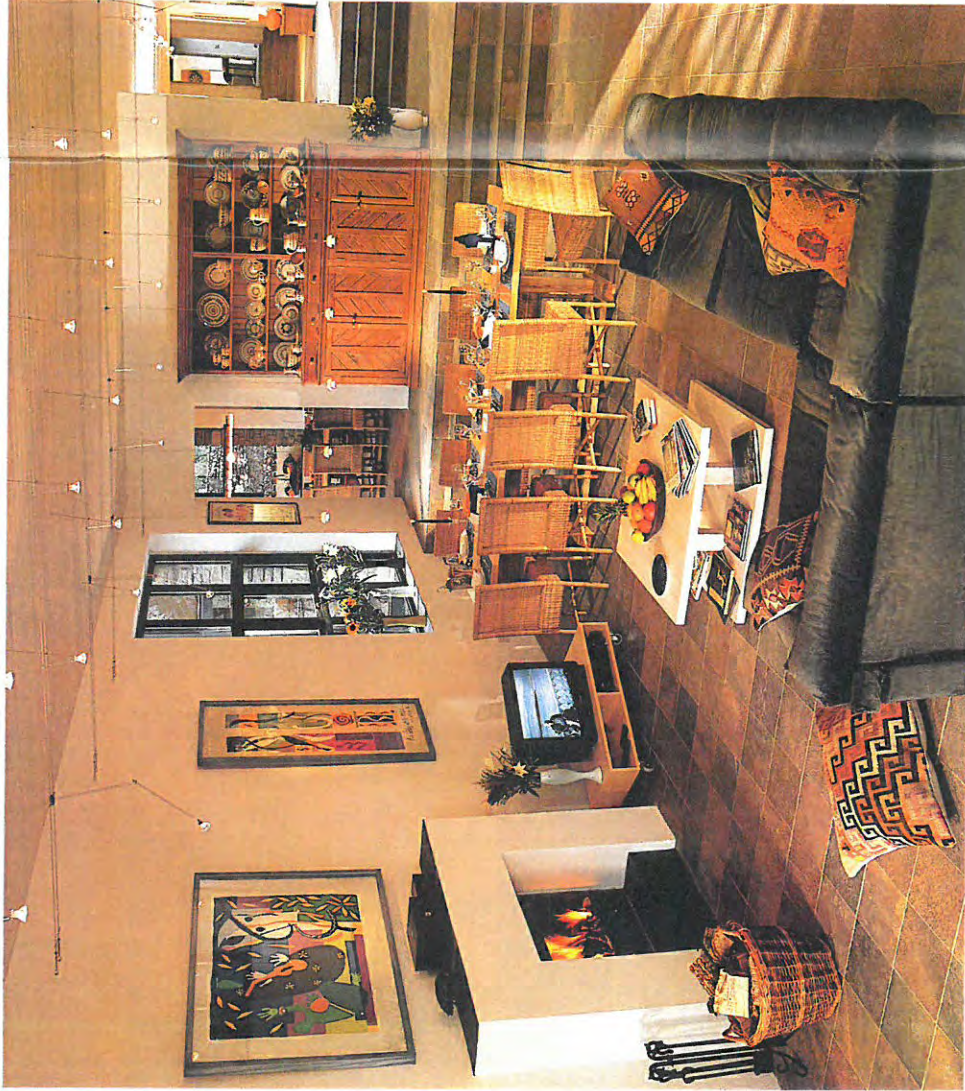
35



A fully equipped kitchen, spacious dining/living room with open fire, under-floor heating, 3 large bedrooms (each with bathroom en suite), sauna, satellite TV, video, telephone and fax.



## SILVER BIRCH HOUSE • WEST WING



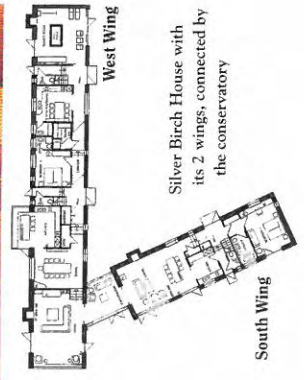
36



37



**T**he success of Linden House prompted us to build an even larger and more luxurious house. Silver Birch House has been built in the same style as Linden House with larger bedrooms (nine of which are en suite). There are three large kitchens, sauna and a games room providing fun for all the family. The living room in the South and West Wing can be linked to accommodate large groups for parties, family reunions or conferences.



Silver Birch House with its 2 wings, connected by the conservatory

## SILVER BIRCH HOUSE • WEST WING



38



39



**I**n the West Wing kitchen and dining area twenty two people can dine together. The spacious kitchen is fitted with a full range of cooking equipment and utensils that would be the envy of even the most fervent cook. There is a spectacular view of Glengarriff Harbour from this kitchen which opens out onto a large terrace leading down to the seashore.

SILVER BIRCH HOUSE • WEST WING



Nine of the eleven bedrooms have en suite bathrooms (bath and shower) with large wardrobe space in each. The interior design is an original mixture of antique and modern furniture. Each room has its own telephone and television point.

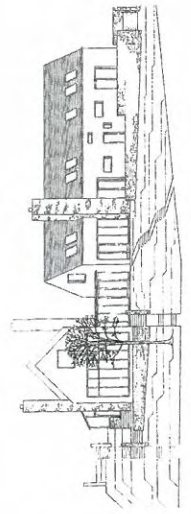


West Wing - Ground floor: Conservatory, living room/dining area, open fire and under-floor heating (TV, video, satellite, stereo system, telefax, telephone). 2 fully equipped kitchens, large dining area. Sauna, games room (pool table, soccer table, darts etc., and a stereo system). 1 twin bedroom with bathroom ensuite. First floor: 2 double bedrooms with bathrooms ensuite, 2 twin bedrooms with bathrooms ensuite, 2 twin rooms and bathroom.

SILVER BIRCH HOUSE • WEST WING



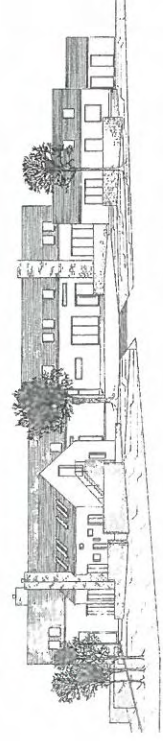
42



West Elevation



43



South Elevation

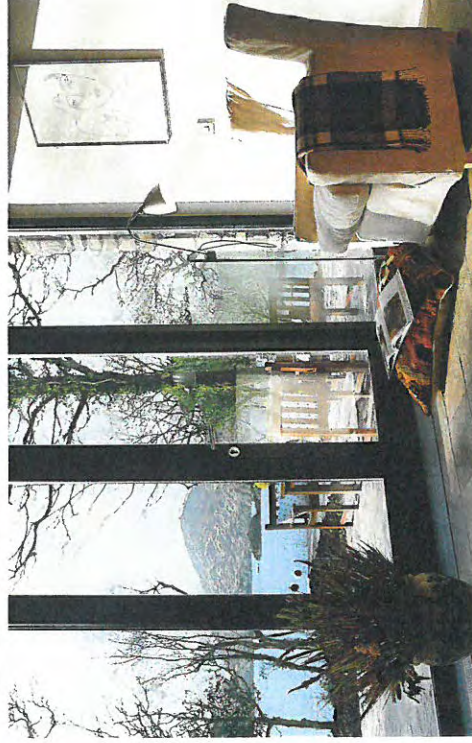


## SILVER BIRCH HOUSE • SOUTH WING

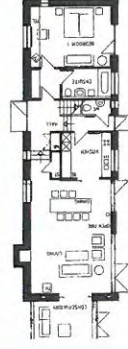


44

**F**rench doors lead from the South Wing living room onto a large terrace overlooking the sea, with a breathtaking view of Glengarriff Harbour and the mountains. An open fire in each living room and games room combined with underfloor heating guarantees warmth and comfort throughout.



45



South Wing

South Wing - Ground floor: Living room/dining area, open fire and underfloor heating (TV, video, satellite, stereo system, telephone). Kitchen (dishwasher, microwave, fridge/freezer), washing machine/dryer; 1 double bedroom with bathroom ensuite, guest toilet.  
 First floor: 1 double bedroom with bathroom ensuite, 2 twin bedrooms and bathroom.

## SILVER BIRCH HOUSE



46

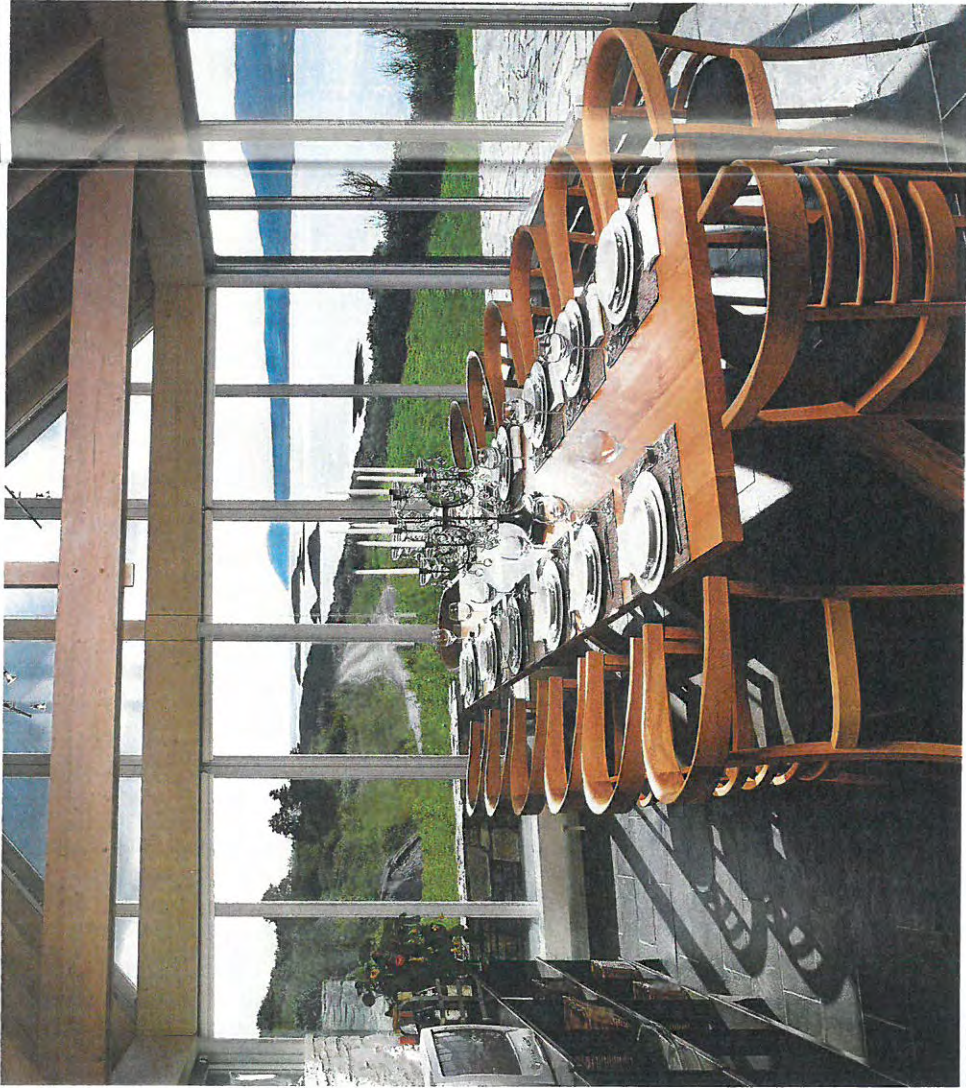


47



**O**ur all weather games room equipped with a pool table, indoor soccer, dart boards, large variety of other games and a stereo system provides entertainment for adults and children alike.

# KILCOMANE HOUSE



48



49

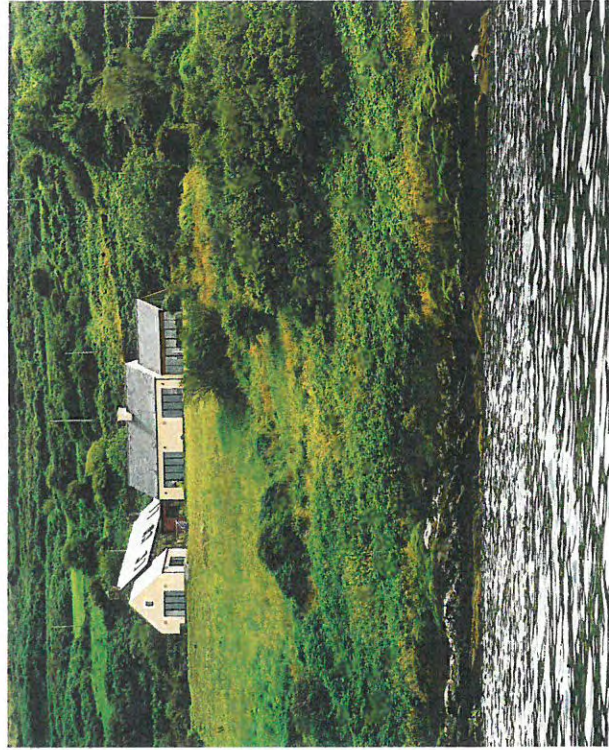
**K**ilcomane House is as close to the sea as you are ever likely to find, looking out (without binoculars) at the seals at play on a small island just in front of the house. There is a wonderful view of Dunmanus Bay to the east and to the west. Kilcomane Pier is just a stroll away. Kilcomane House is also part of Cashelane Farm, surrounded by green pastures. Here you are guaranteed peace and tranquility, away from the hustle and bustle of everyday life.

Locally hand-crafted units with sleek granite worktops have built-in gas and electric hob, and 2 dishwashers. A contemporary island/breakfast counter houses a combination microwave oven. The hi-tech kitchen has freestanding stainless steel double oven and fridge freezer. (Additional fridge/freezer, 2 washing machines and dryers are in the pantry).

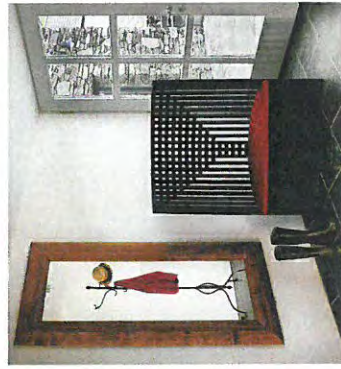
# KILCOMANE HOUSE



50



51



**K**ilcomane House, right on the water's edge, is a unique blend of traditional house with modern interior. High, "lime-washed" ceilings lend a spacious feeling to the rooms. It has television, CD, DVD and a good old-fashioned open fire. The hi-tech kitchen is a chef's dream, just a step away from the dining room, which seats 14 and has a spectacular view of Dunmanus Bay. The dining area opens to a large terrace, with a built-in stone barbeque.

# KILCOMANE HOUSE



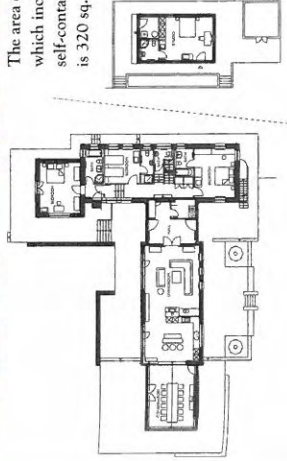
52



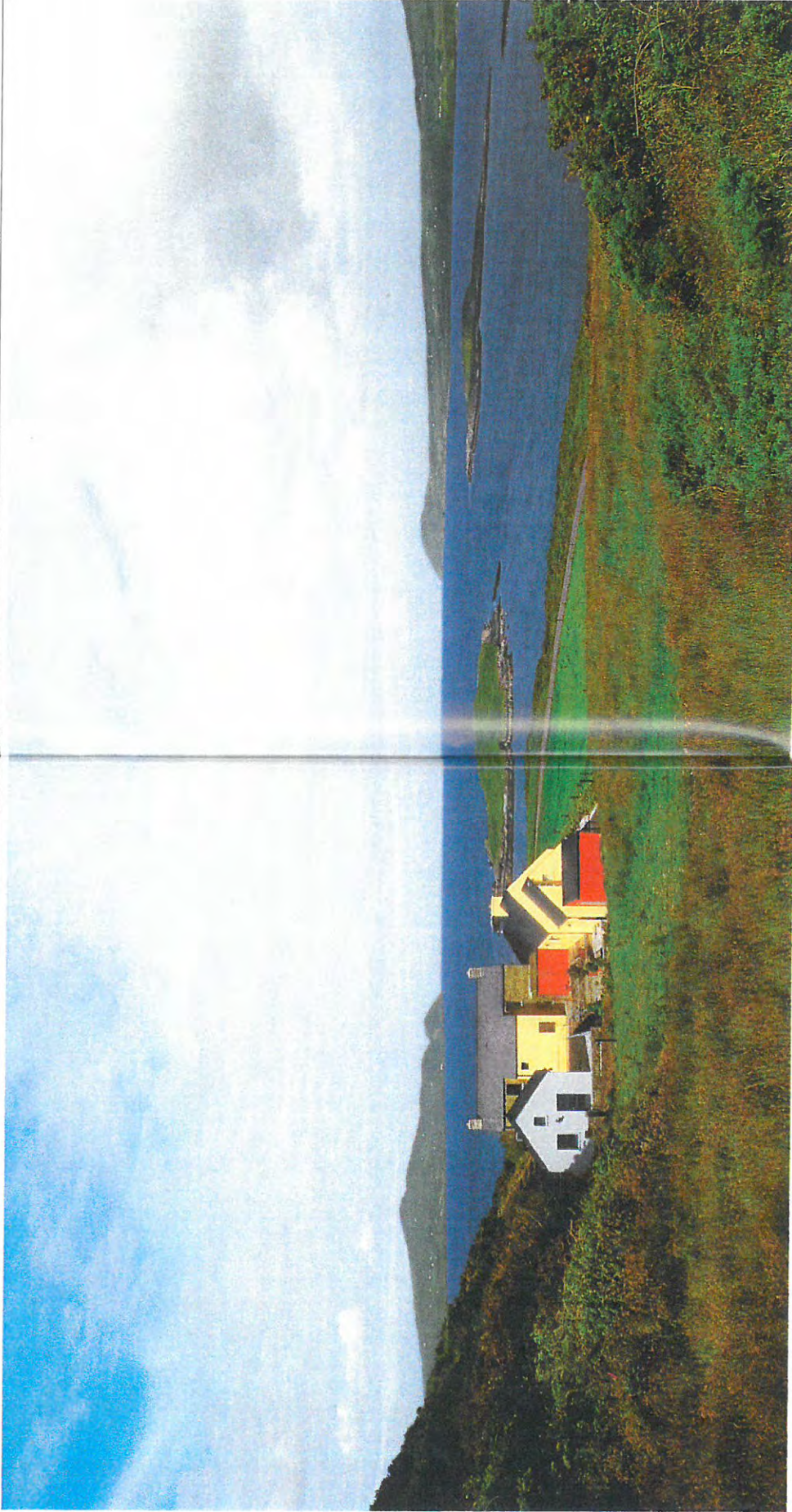
53



The area of the house which includes a separate self-contained apartment is 320 sq. mtrs.



## BALLYVONANE HOUSE



54

55

**H**ere, where Dunmanus Bay opens out to the Atlantic, is Ballyvonane House with spectacular views of Three Castle Head to the South and Sheep's Head to the West. Around the house, you will see Aberdeen Angus, Charolais cattle and horses grazing. The 350 hectares of Cashelane Farm are ideal for hill walking, pony trekking or just taking a scenic walk through the farms' 6 km of coastline.

## BALLYVONANE HOUSE



56

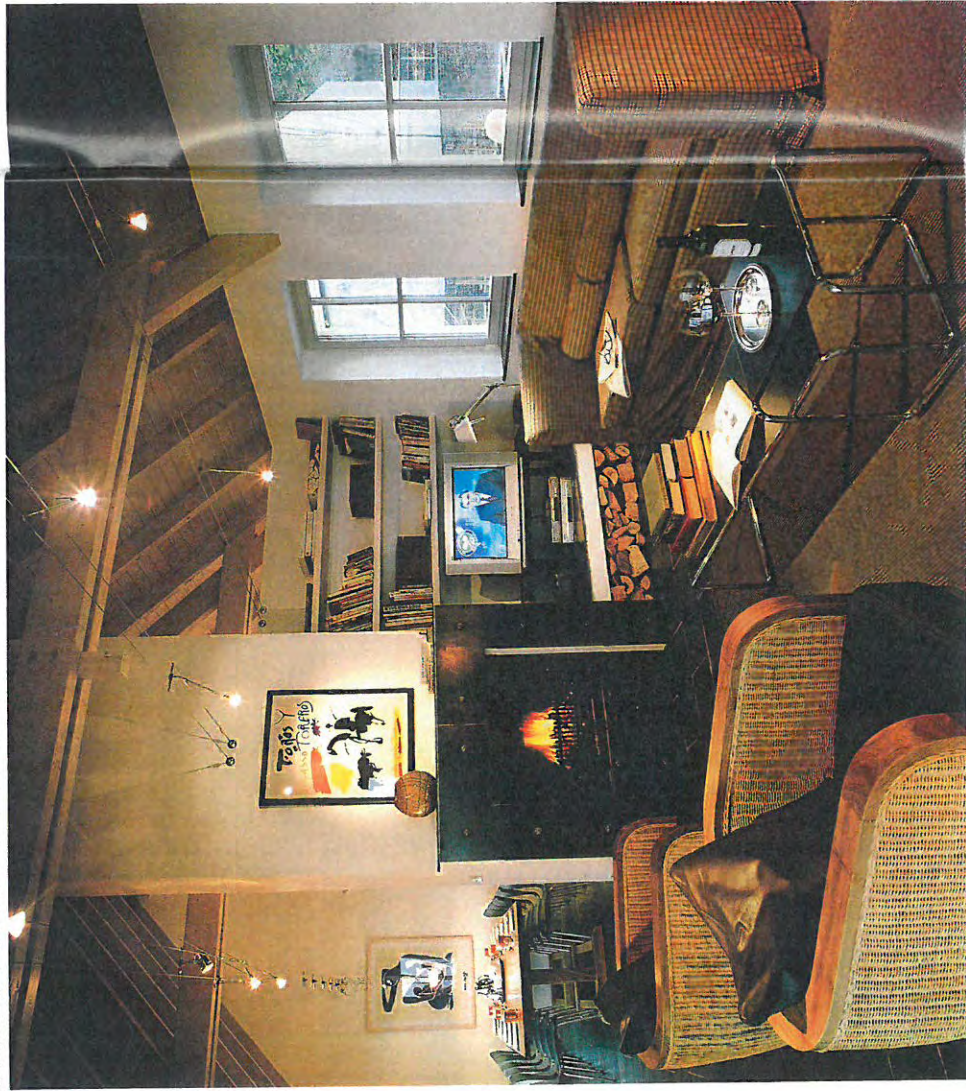


57

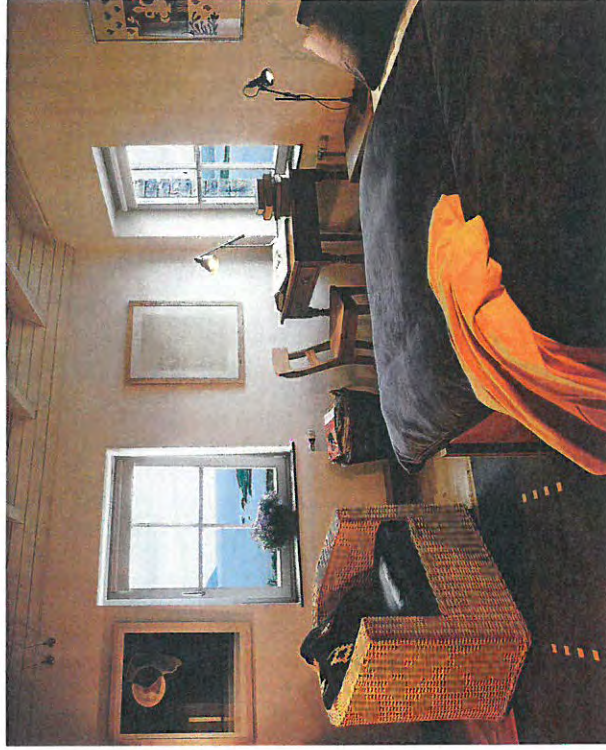


**B**allyvonane House lies in the most magnificent setting. With every turn in the road, the landscape changes from wild hillside to coastal inlet - every part inviting you to explore. From every part of the house, the views are breathtaking, and you enjoy them with maximum home comfort - TV, CD, DVD and even a glowing open fire. The airy conservatory has an interior that matches its natural surroundings. A place where you can relax in elegant, sumptuous chairs and settees.

# BALLYVONANE HOUSE



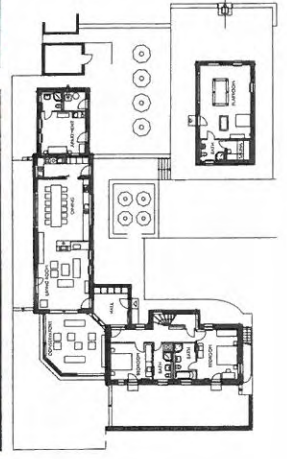
58



59



The area of the house which includes a separate self-contained apartment is 320 sq. mtrs.





# BALLYVONANE HOUSE



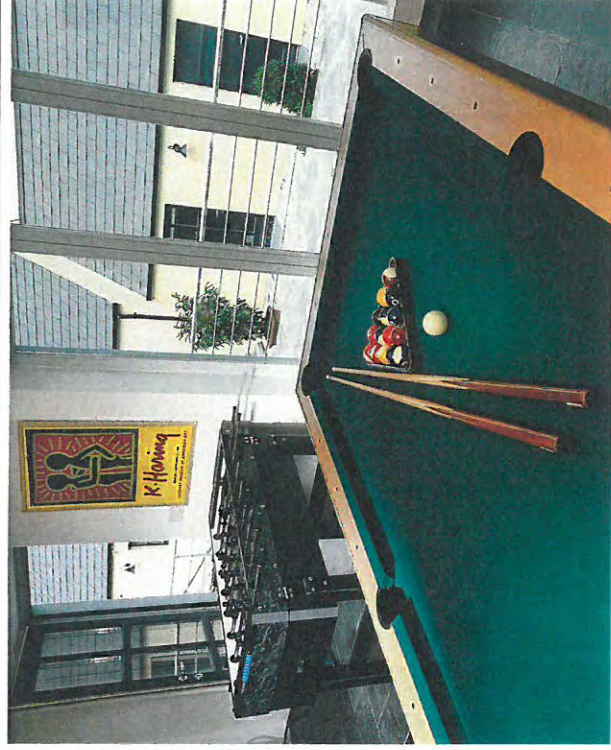
**A** kitchen with all a cook needs - and more. Totally integrated, with a stainless steel oven, big electric hob, fridge and dishwasher. There's also a pantry kitchen with additional oven, gas hob, another dishwasher, fridge freezer, two washing machines and dryers.



# BALLYVONANE HOUSE



62



63



From the main house, you step out into a large courtyard area with a built-in barbeque. As you know, in this part of the world, you can't rely on the weather! The playground is the answer. It has a pool table, indoor soccer and other games. And a truly luxurious sauna.

## Cashelfean Holiday Homes - Price List 2015

Location	Name of Holiday House	Sleeps	Bathrooms	Off Season	Main Season	Shoulder Season	Weekend (3 nights)
Durrus	Cashelfean I	4 - 1 double, 1 twin	1	280.00 €	480.00 €	385.00 €	
Durrus	Cashelfean Ia	2 - 1 twin	1	140.00 €	220.00 €	175.00 €	
Durrus	Cashelfean I & Ia (together)	6 - 1 double, 2 twin	2	320.00 €	680.00 €	545.00 €	
Durrus	Cashelfean II	6 - 1 double, 2 twin	1 + wc	650.00 €	950.00 €	760.00 €	
Durrus	Carbery I	8 - 1 double, 3 twin	2 + shower	750.00 €	1,200.00 €	960.00 €	
Durrus	Carbery II	6 - 1 double, 2 twin	1	650.00 €	950.00 €	760.00 €	
Durrus	Carbery III	6 - 1 double, 2 twin	1	650.00 €	950.00 €	760.00 €	
Durrus	Carbery IV	6 - 1 double, 2 twin	2	700.00 €	1,100.00 €	880.00 €	
Durrus	Ballyvonane	12 - 6 double	6	2,000.00 €	3,000.00 €	2,400.00 €	
Durrus	Kilcomane	12 - 5 double, 1 twin	5 + wc	1,600.00 €	2,700.00 €	2,160.00 €	
Glengarriff	Aspen	6 - 1 double, 2 twin	2 + wc	650.00 €	950.00 €	760.00 €	
Glengarriff	Maple	6 - 1 double, 2 twin	2	650.00 €	950.00 €	760.00 €	
Glengarriff	Holly	6 - 1 double, 2 twin	3	950.00 €	1,500.00 €	1,200.00 €	
Glengarriff	Linden South Wing	6 - 1 double, 2 twin	3	900.00 €	1,350.00 €	1,100.00 €	
Glengarriff	Linden West Wing	14 - 1 double, 6 twin	3	1,500.00 €	2,500.00 €	1,800.00 €	
Glengarriff	Linden South Wing & West Wing	20 - 2 double, 8 twin	6	2,300.00 €	3,500.00 €	2,800.00 €	1,900.00 €
Glengarriff	Silver Birch South Wing	8 - 2 double, 2 twin	3	1,250.00 €	1,950.00 €	1,500.00 €	
Glengarriff	Silver Birch West Wing	14 - 2 double, 5 twin	6	2,150.00 €	3,300.00 €	2,500.00 €	
Glengarriff	Silver Birch South Wing & West Wing	22 - 4 double, 7 twin	9	3,000.00 €	4,950.00 €	3,960.00 €	2,950.00 €

Off Season:

Main Season:

Shoulder Season:

January 3rd – May 30th, 29th August – 19th December

June 27th – August 29th

May 30th – June 27th, Christmas/New Year

For further information and availability please contact:

**Eleanor O'Regan, Cashelfean Holiday Houses, Durrus, Co. Cork, Ireland.**

Phone: +353 (0)27 62000 - email: [cncc@indigo.ie](mailto:cncc@indigo.ie) - website: [www.cashelfean.com](http://www.cashelfean.com)

## **Cashelfean Houses Preise 2014.**

**Outlook? Little changes – denken wir**

**Aber: bucht das besser über uns! Nur so können wir denen über die nächste Zeit mehr Flexibilität oder auch mal ein spezial entlocken.**

**Die Häuser erscheinen teuer. Umgelegt jedoch auf die Anzahl möglicher Schlafplätze sind sie es keineswegs: bezahlbarer Luxus!**

### **Houses in Glengarriff**

#### **SILVER BIRCH HOUSE**

##### Silver Birch House Bedroom/Bathroom Layout

South Wing – Ground Floor  
1 Double Bedroom with en-suite Bathroom (2)

South Wing – First Floor  
1 Double Bedroom with en-suite Bathroom (2)  
2 Twin Bedrooms (4)  
1 Bathroom

West Wing – Ground Floor  
1 Twin Bedroom with en-suite Bathroom (2)  
Sauna with Shower

West Wing – First Floor (Lower)  
1 Twin Bedroom with en-suite Bathrooms (2)  
2 Twin Bedrooms (4)  
1 Bathroom  
1 Double Bedroom with en-suite Bathroom (2)

West Wing – First Floor (Upper)  
1 Double Bedroom with en-suite Bathroom (2)  
1 Twin Bedroom with en-suite Bathroom (2)

= Total: 22 person

#### **RATES**

**South Wing**  
**Off Season (week) €950.00**  
**Main Season (week) €1650.00**

**West Wing**  
**Off Season (week) €1715.00**  
**Main Season (week) €3050.00**

**South Wing & West Wing**  
**Off Season (week) €2540.00**  
**Main Season (week) €4635.00**  
**Weekend (3 nights) €2500.00**

---

#### **LINDEN HOUSE**

##### Linden House Bedroom/Bathroom Layout

South Wing – Ground Floor  
1 Double Bedroom with en-suite Bathroom (2)  
Sauna with Shower

South Wing – First Floor  
2 Twin Bedrooms (4)  
1 Bathroom

West Wing – Ground Floor/First Floor  
1 Double Bedroom (2)  
6 Twin Bedrooms (12)  
3 Bathrooms

= Total: 20 persons

#### **RATES**

South Wing  
Off Season (week) €636.00  
Main Season (week) €1000.00

West Wing  
Off Season (week) €1270.00  
Main Season (week) €2220.00

South Wing & West Wing  
Off Season (week) €1900.00  
Main Season (week) €3240.00  
Weekend (3 nights) €1650.00

---

#### **ASPEN HOUSE**

Large two storey house.

Downstairs: Kitchen/dining room, sitting room, open fire, 1 double bedroom, toilet, terrace.

Upstairs: bathroom, 2 double bedrooms each with bathroom en suite. (Oil system central heating, washing machine/dryer, dishwasher, TV, telephone).

#### **RATES**

Off Season (week) €550.00  
Main Season (week) €850.00

---

#### **MAPLE HOUSE**

House with gallery upstairs. Downstairs: Large kitchen/dining room, living room, open fire, bathroom, 2 double bedrooms (1 with bathroom en suite), terrace. Upstairs: Loft

Gallery, 1 double bedroom. (Oil system central heating, washing machine/dryer, dishwasher, TV, telephone).

#### **RATES**

Off Season (week) €550.00

Main Season (week) €850.00

---

### **HOLLY HOUSE**

Situated adjacent to the golf course, overlooking Glengarriff Harbour, Holly House is our largest 3 bedroom house - luxuriously furnished in every detail. Complete with two terraces on different levels and surrounded by the estate's lush 150 year-old woodland. A fully equipped kitchen, spacious dining/living room with open fire, under-floor heating, 3 large bedrooms (each with bathroom en suite), sauna, satellite TV, video, telephone and fax. Most luxurious 3 bedroom house, all bedrooms have bathrooms en-suite.

#### **RATES**

Off Season (week) €750.00

Main Season (week) €1320.00

---

### **Holiday Houses in Durrus**

#### **Ballyvonane House**

A kitchen with all a cook needs - and more. Totally intergrated, with stainless steel oven, big electric hob, fridge and dishwasher. There's also a pantry kitchen with additional oven, gas hob, another dishwasher, fridge freezer, two washing machines and dryers.

#### Ballyvonane House

5 bedrooms, each with bathroom en-suite, 6th bedroom optional, sauna, playroom, tv, video, telephone and fax. Area of house: 320 sqm.

#### Ballyvonane House Bedroom/Bathroom Layout

Ground Floor

1 x Double Bedroom en-suite (2)

1x Double Bedroom (2)

Bathroom

First Floor

2x Double Bedrooms en-suite (4)

Apartment:

1 x Double (sofa bed) (2)

Bathroom

Playroom:

1 x Double (sofa bed) (2)

Bathroom

Sauna

= Total: 12 persons

#### **RATES**

Off Season (week) €1800.00

Main Season (week) €2850.00

---

### **Kilcomane House**

Locally hand-crafted units with sleek granite worktops have build-in gas and electric hob and 2 dishwashers. The kitchen has freestanding stainless steel double oven and fridge freezer. Additional fridge / freezer, 2 washing machines and dryers in the pantry.

#### Kilcomane House

5 bedrooms, each with bathroom en-suite, 6th bedroom optional, sauna, tv, video, telephone and fax. The area of the house, which includes a separate self-contained apartment, is 320 sqm.

#### Kilcomane House Bedroom/Bathroom Layout

Ground Floor:

2 x Double Bedrooms en-suite (4)

1x Twin Room (2 Single couch beds) (2)

First Floor:

2X Double Bedrooms (4)

Bathroom

Sauna

Apartment

1 x Double (sofa bed) (2)

Bathroom

= Total: 12 persons

## **RATES**

Off Season (week) € 1450.00

Main Season (week) € 2500.00

---

## **CASHELFEAN HOUSE 1 & 1a**

Two-storey house.

Downstairs: Kitchen, dining and sitting area, open fire, terrace. Upstairs: two double bedrooms, bathroom. (electric heating, washing machine / dryer, TV, telephone).

Extension (1a),

also to let separately: Single room apartment, with kitchen / dining, shower, toilet, open fire, terrace.

## **RATES**

Cashelfean 1

Off Season (week) €280.00

Main Season (week) €480.00

Cashelfean 1a

Off Season (week) €140.00

Main Season (week) €220.00

Cashelfean 1 & 1a both houses

Off Season (week) €320.00

Main Season (week) €680.00

---

## **CASHELFEAN HOUSE 2**

Two-storey house.

Downstairs: Kitchen, dining and sitting area, open fire, double bedroom, toilet, terrace.

Upstairs: 2 double bedrooms, bathroom. (Oil system central heating, washing machine/dryer, dishwasher, TV, telephone).

## **RATES**

Off Season (week) €550.00

Main Season (week) €850.00

---

## **CASHELFEAN HOUSE 4**

Downstairs: Entrance porch, open plan kitchen/dining which includes: oven/hob, dishwasher, microwave and fridge. Living room with open fire, TV, DVD and telephone.

There is an adjoining utility room with washing machine/dryer. Upstairs: 1 double bedroom, 1 twin bedroom (with 2 single beds) and bathroom.

## **RATES**

Off Season (week) €300.00

Main Season (week) €550.00

---

## **CARBERY HOUSE 1**

Large two-storey house.

Downstairs: Kitchen, spacious dining and sitting room, open fire, bathroom, large sauna and playroom, terrace.

Upstairs: 4 double bedrooms, shower and toilet. (Oil system central heating, washing machine/dryer, dishwasher, TV, telephone).

## **RATES**

Off Season (week) €570.00

Main Season (week) €980.00

---

## **CARBERY HOUSE 3**

Downstairs:

Kitchen, dining and sitting room, open fire, bathroom, 2 double bedrooms, terrace.

Upstairs:

Loft Gallery, 1 double bedroom. (Oil system central heating, washing machine/dryer, dishwasher, TV, Telephone).

## **RATES**

Off Season (week) €500.00

Main Season (week) €800.00

---

## **CARBERY HOUSE 4**

Downstairs: Kitchen/dining room, living room, open fire, bathroom, 2 double bedrooms (1 with bathroom en suite), terrace

Upstairs: Loft Gallery, 1 double bedroom (Oil central heating, washing machine/dryer, dishwasher, microwave, TV, telephone).

## **RATES**

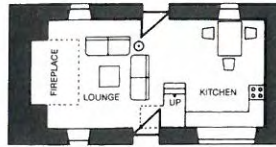
Off Season (week) €550.00

Main Season (week) €890.00

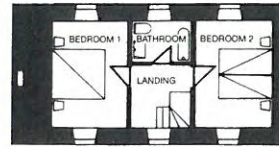
Off Season 30<sup>th</sup> August–31<sup>st</sup> May. y  
Main Season 31<sup>st</sup> May–30<sup>th</sup> August. r

### CASHELFEAN I

Off season (week)	€ 280.00
Main season (week)	€ 480.00



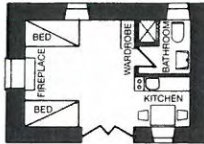
Ground Floor



First Floor

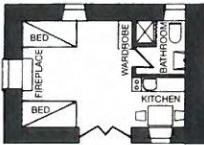
### CASHELFEAN Ia

Off season (week)	€ 140.00
Main season (week)	€ 220.00

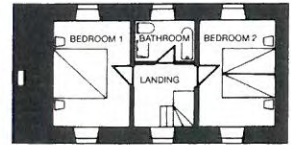


### CASHELFEAN I & Ia (together)

Off season (week)	€ 320.00
Main season (week)	€ 680.00



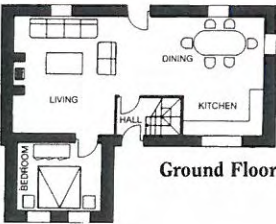
Ground Floor



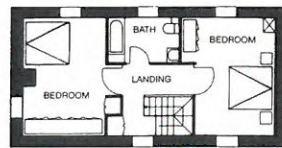
First Floor

### CASHELFEAN II

Off season (week)	€ 500.00
Main season (week)	€ 800.00



Ground Floor

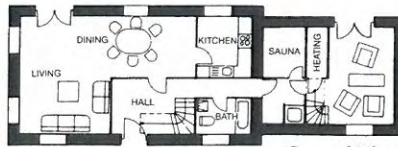


First Floor

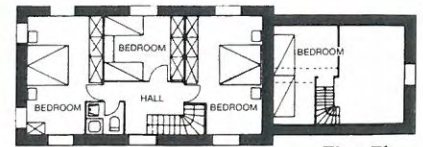
### CARBERY COTTAGE I

Off season (week)	€ 520.00
Main season (week)	€ 980.00

4 bedroom house and Sauna.



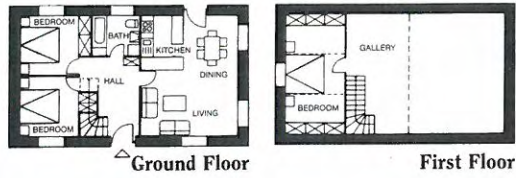
Ground Floor



First Floor

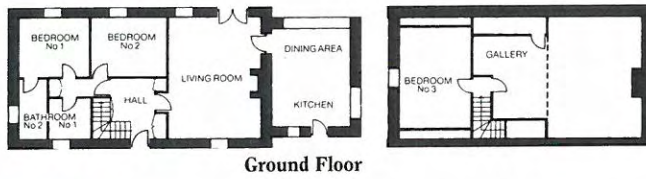
### CARBERY COTTAGE II & III

Off season (week)	€ 450.00
Main season (week)	€ 750.00



### CARBERY COTTAGE IV

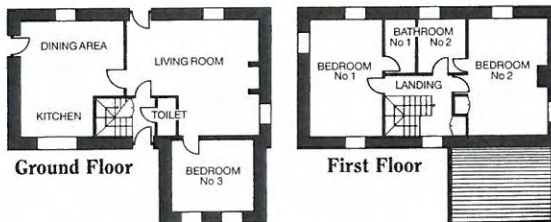
Off season (week)	€ 500.00
Main season (week)	€ 840.00



Glengarriff

### ASPEN HOUSE

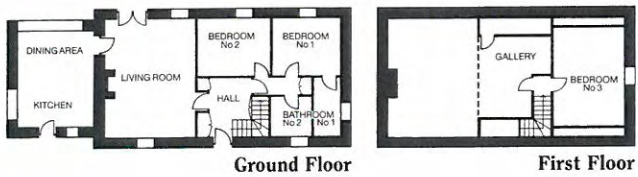
Off season (week)	€ 500.00
Main season (week)	€ 800.00



Glengarriff

### MAPLE HOUSE

Off season (week)	€ 500.00
Main season (week)	€ 800.00

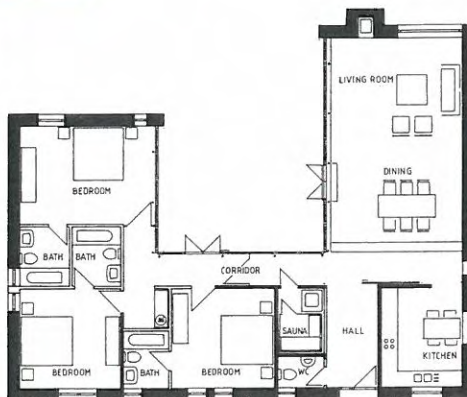


Glengarriff

### HOLLY HOUSE

Off season (week)	€ 700.00
Main season (week)	€ 1270.00

Most luxurious 3 bedroom house,  
all bedrooms have bathrooms en-suite.  
Sauna, satellite TV.





Glengarriff

**LINDEN HOUSE**

**South Wing, West Wing**

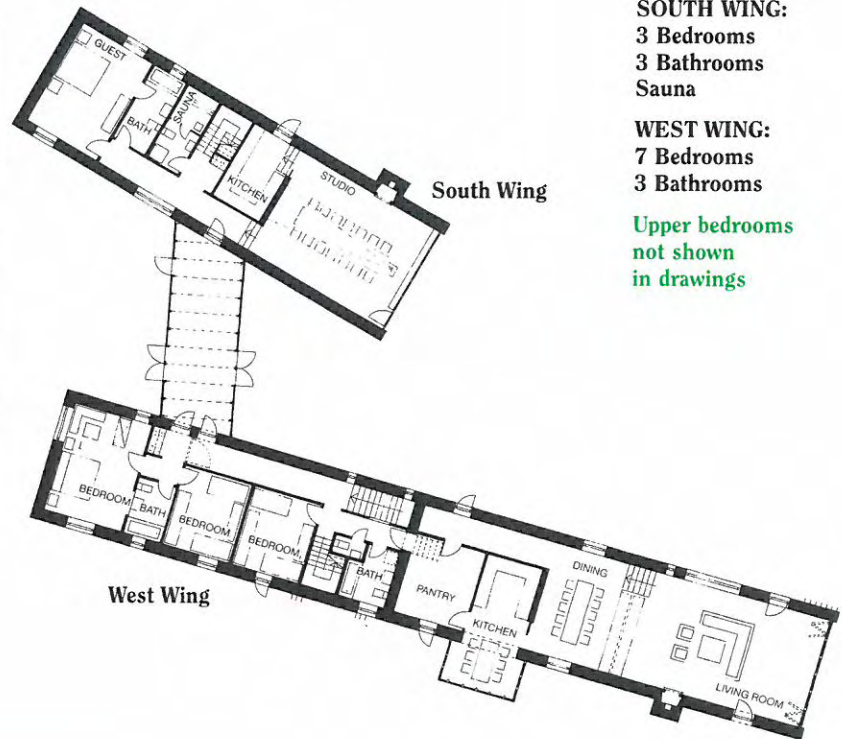
Off season (week)	€ 1900.00
Main season (week)	€ 3240.00
Weekend (3 nights)	€ 1650.00

**South Wing only**

Off season (week)	€ 635.00
Main season (week)	€ 1000.00

**West Wing only**

Off season (week)	€ 1270.00
Main season (week)	€ 2220.00



**SOUTH WING:**  
3 Bedrooms  
3 Bathrooms  
Sauna

**WEST WING:**  
7 Bedrooms  
3 Bathrooms

Upper bedrooms  
not shown  
in drawings

Glengarriff

**SILVER BIRCH HOUSE**

**South Wing, West Wing**

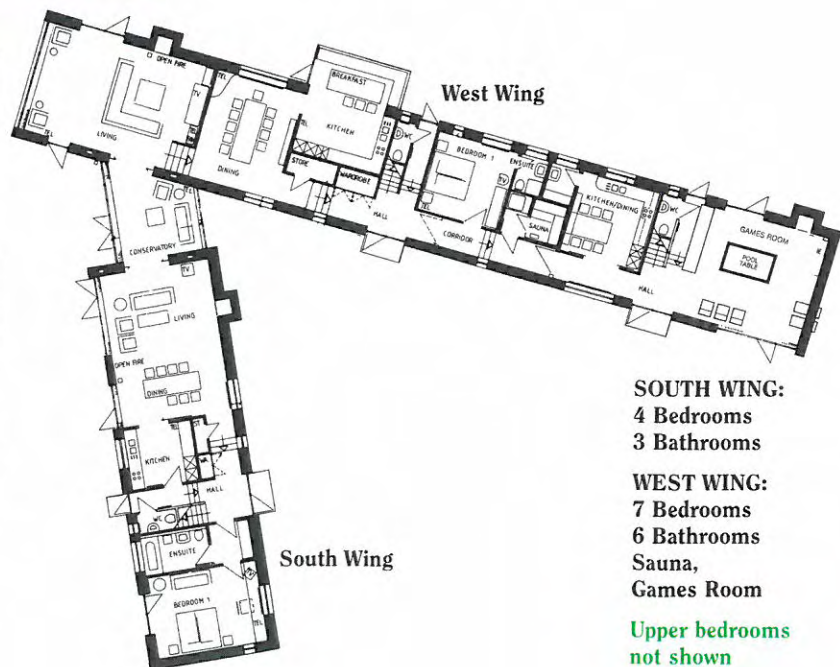
Off season (week)	€ 2540.00
Main season (week)	€ 4635.00
Weekend (3 nights)	€ 2500.00

**South Wing only**

Off season (week)	€ 950.00
Main season (week)	€ 1650.00

**West Wing only**

Off season (week)	€ 1715.00
Main season (week)	€ 3050.00



**SOUTH WING:**  
4 Bedrooms  
3 Bathrooms

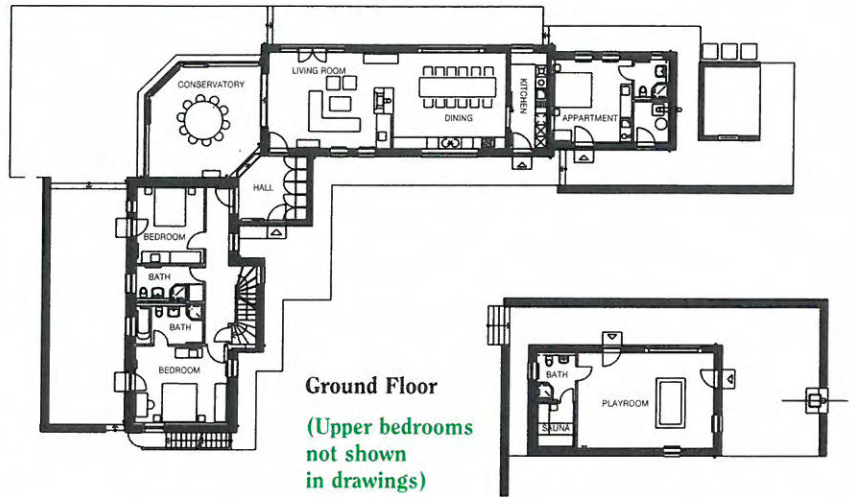
**WEST WING:**  
7 Bedrooms  
6 Bathrooms  
Sauna,  
Games Room

Upper bedrooms  
not shown  
in drawings

## BALLYVONANE HOUSE

Off season (week)	€ 1750.00
Main season (week)	€ 2800.00

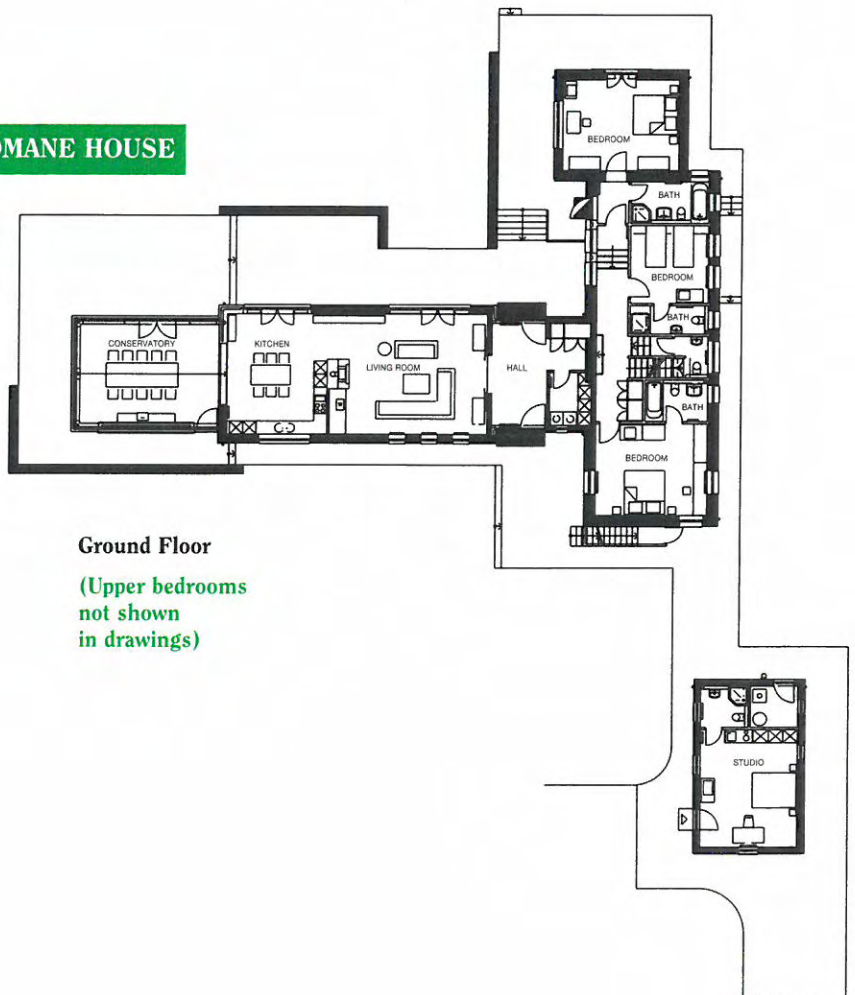
Luxurious 5 bedroom house, each with bathroom en-suite, 6th bedroom optional, sauna, playroom, tv, video, telephone and fax (Area of house: 300 sqm)



## KILCOMANE HOUSE

Off season (week)	€ 1400.00
Main season (week)	€ 2450.00

Luxurious 5 bedroom house, each with bathroom en-suite, 6th bedroom optional, sauna, tv, video, telephone and fax (Area of house: 300 sqm)

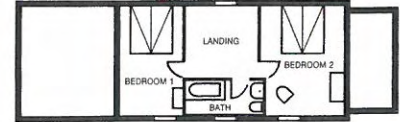


## CASHELFEAN IV

Off season (week)	€ 300.00
Main season (week)	€ 550.00



Ground Floor



First Floor

**Eleanor O'Regan**

**Office: 027/62000, 9 a.m. – 5 p.m. Monday to Friday**  
**e-mail: [cncd@indigo.ie](mailto:cncd@indigo.ie) • website: [www.cashelfean.com](http://www.cashelfean.com)**

Holiday Houses Telephone: CARBERY I 027 61294 • CARBERY II 027 61295 • CARBERY III 027 61296 • CARBERY IV 027 61297 • CASHELFEAN I 027 61291  
CASHELFEAN II 027 61292 • ASPEN 027 63320 • MAPLE 027 63321 • HOLLY 027 63324 (also Fax) • LINDEN WEST WING 027 63322 (also Fax)  
LINDEN SOUTH WING 027 63323 • SILVER BIRCH WEST WING 027 63506 • SILVER BIRCH SOUTH WING 027 63507 • SILVER BIRCH Fax 027 63505  
BALLYVONANE 028 35057 (also Fax) • KILCOMANE 027 62933 (also Fax) • CASHELFEAN IV 027 61213